

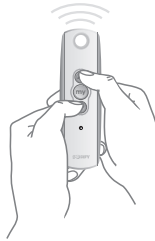
Altus 6 Step Visual Reference Guide

Remain clear of moving products when performing these operations.

STEP 1

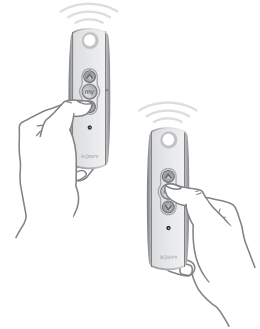
Initiate programming by pressing both the **UP** (▲) and **DOWN** (▼) buttons at the same time until the motor jogs.*

NOTE: After every command the motor will jog to confirm.



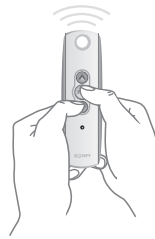
STEP 2

Check the direction of operation. Press and hold the **DOWN** (▼) button and confirm it moves the motor down or out (the motor will be in momentary mode). To change the direction, press and hold the **MY** (my) (stop) button until the motor jogs.



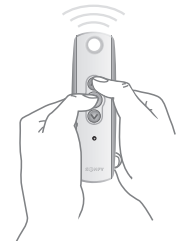
STEP 3

Bring the motor to your desired upper limit. Press and hold the **MY** (my) and **DOWN** (▼) buttons until the motor moves DOWN, then release. Stop the motor where the LOWER limit should be set, you can adjust by pressing the (▲) or (▼) buttons. *For larger units, set limit at 1/2 down or out position initially. Finalize programming and allow motor to rest for 10 minutes. Then follow steps below to adjust to final outer limit.*



STEP 4

Press and hold the **MY** (my) (stop) and **UP** (▲) buttons until the motor starts to move up, then release. The motor will stop at the original upper point.



STEP 5

Press and hold the **MY** (my) (stop) button until the shade jogs to confirm the limit setting.



STEP 6

Press and hold the **Program** button on the back of the transmitter until the motor jogs. It will now operate in a maintained fashion. Double check the limits as a precaution.



*Jog - Brief **back and forth** or **up and down** movement from the motor.

To Adjust Limits

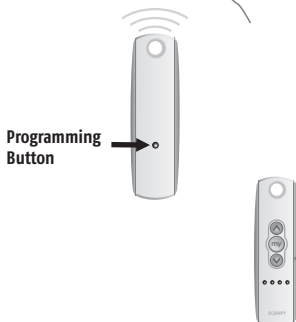
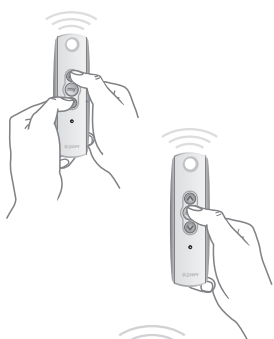
To change a limit: Move the motor to its current limit position to be changed and let it stop. Press the **UP** (▲) and **DOWN** (▼) buttons simultaneously until the motor jogs, then release. Adjust to a new limit position. Press the **MY** (stop) button until the motor jogs, then release. Check the new limit.

To add a remote/channel or sun or wind sensor: First select the remote/channel that is already programmed to the motor and press the program button on the back until the motor jogs. Then select the remote/channel/sun or wind sensor that you would like to add and press the program button on that until the motor jogs.

To reset a previously programmed motor: you will need to disconnect power (120V AC) for 2 seconds, reconnect for 10 seconds, disconnect for another 2 seconds and reconnect. The motor should start to move/jog and then stop on its own (if this does not happen, continue to perform the disconnects until it does). Once the motor stops, press and hold the programming button on the back of the remote and count to ten without letting go. The motor should jog twice.

If using a multi-channel remote, begin by selecting channel to be changed.

Please contact SOMFY at 877-22SOMFY or www.somfypro.com for detailed installation instructions.

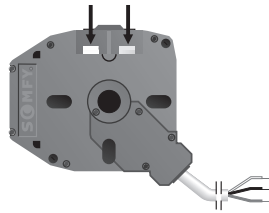


RTS CMO Visual Reference Guide

Remain clear of moving products when performing these operations.

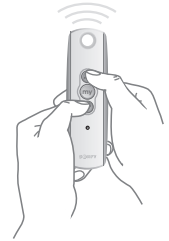
STEP 1

Make sure the limit setting buttons are depressed into the RTS CMO motor.



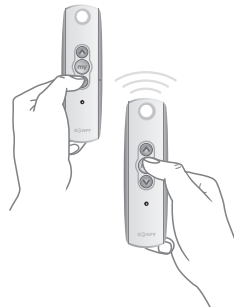
STEP 2

Initiate programming by pressing both the **UP** (▲) and **DOWN** (▼) buttons at the same time until the motor jogs.*



STEP 3

Check the direction of operation. Press and hold the **DOWN** (▼) button and confirm it moves the motor down or out (the motor will be in momentary fashion). To change the direction press and hold the **MY** (my) (stop) button until the motor jogs.



STEP 4

SET UPPER LIMIT

Press and hold the **UP** (▲) button of the remote to move the motor to the desired **UPPER** limit position, then release. Press and release the UPPER limit button on the motor.



STEP 5

SET LOWER LIMIT

Press and hold the **DOWN** (▼) button of the remote to move the motor to the desired lower limit position, then release. Press and release the lower limit button on the motor. *For larger units, set limit at 1/2 down or out position initially. Finalize programming and allow motor to rest for 10 minutes. Then follow steps below to adjust to final outer limit.*



STEP 6

USER MODE

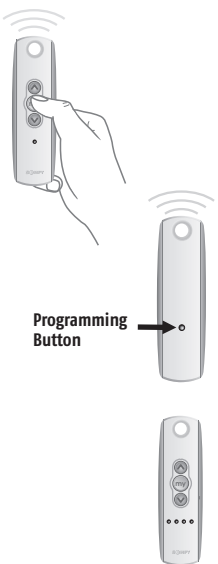
Once the desired limits are set, press and hold the **Program** button on the back of the transmitter until the motor jogs, then release. The motor will now operate in maintained fashion. Double check the limits as a precaution.



Programming Button

*Jog – Brief **back and forth** or **up and down** movement from the motor.

CHANGING THE LIMIT SETTINGS



To change the limit settings: Press the **MY** (my) (stop) button on the remote then ensure corresponding limit button is depressed. Next, repeat steps 4 or 5 keeping in mind that the motor may be operating in a maintained mode. Therefore you may only need to press the **UP** (▲) or **DOWN** (▼) buttons momentarily to move the motor, and the **MY** (my) (stop) button must be pressed in order to stop it.

To add a remote/channel or sun or wind sensor: First select the remote/channel that is already programmed to the motor and press the program button on the back until the motor jogs. Then select the remote/channel/sun or wind sensor that you would like to add and press the program button on that until the motor jogs.

To reset a previously programmed motor: you will need to disconnect power (120V AC) for 2 seconds, reconnect for 10 seconds, disconnect for another 2 seconds and reconnect. The motor should start to move/jog and then stop on its own (if this does not happen, continue to perform the disconnects until it does). Once the motor stops, press and hold the programming button on the back of the remote until the motor jogs one time.

If using a multi-channel remote, begin by selecting channel to be changed.

Please contact SOMFY at 877-22SOMFY or www.somfypro.com for detailed installation instructions.