



QMI Field Sheet for Product Selection

QMI Rolling Shutter Models	Cost factor	Max size Gear (crank)	Max size EZ Drive (low voltage)	Max size spring assist push up/pull down	Max size tube motor w/ std housing	External jack shaft motor required (no housing available)	3x3 or 4x4 steel post required
Transparoll	*****	n/a	n/a	n/a	n/a	all up to 200 sq ft	yes
LX6	**	n/a	n/a	100 sq ft	140 sq ft	141 to 280 sq ft	w/ ext motor
AL7-Perforated slat	*	80 sq ft	70 sq ft	140 sq ft	170 sq ft	171 to 300 sq ft	w/ ext motor
AL7-Solid Slat	*	80 sq ft	70 sq ft	130 sq ft	170 sq ft	171 to 300 sq ft	w/ ext motor
Qcompact (solid only)	*	80 sq ft	70 sq ft	130 sq ft	170 sq ft	171 to 300 sq ft	w/ ext motor
AL2-R-42mm European	.7*	70 sq ft	70 sq ft	n/a	70 sq ft	n/a	n/a

QMI Rolling Shutter Models	Side rail size	Max width	Max height	Security level	Slat Material	Hurricane rated	Vision
Transparoll	3.25" w x 2.25" d + angle	18'	14'	high	.25" Polycarbonate	no	excellent
LX6	3.5" w x 1.06" d	24'	15'	medium	.093" Polycarbonate	no	very good
AL7-Perforated slat	man 3.375" w x 1.06" d motor 3" w x 1.06" d	30'	15'	high	punch aluminum	no	good
AL7-Solid Slat	man 3.375" w x 1.06" d motor 3" w x 1.06" d	30'	15'	high	Extruded aluminum	solid only	n/a
Qcompact (solid only)	man 4.25" w x 1.25" d motor 3.625" w x 1.25" d	20'	15'	high	Extruded aluminum	solid only	n/a
AL2-R-42mm European	2.125" w x 1.06" d	14'	14'	low	Foam-filled aluminum	no	light slit

QMI Security/ Hurricane Models	Cost factor	Max size	Frame dimensions	Security level	Mesh	Hurricane rated	Vision
Fixed Security Screen	.5*	61" x 144"	2-7/16" wide x 1-1/8" deep	High	.28g Stainless	Yes	excellent
Egress Security Screen	.7*	61" x 144"	3-3/4" wide x 2-13/16" deep	High	.28g Stainless	Yes	excellent
Shaped Security Screen	*	61" x 144"	2-7/16" wide x 1-1/8" deep	High	.28g Stainless	Yes	excellent

note: sq ft sizes shown for estimating only. Actual widths and heights will determine actual mounting/control requirements



Compact

- Smallest box size in the industry
- Quiet and smooth operation
- Manual rails 4.25" wide, Motor rails 3-5/8" wide
- No perforated slats/punched available
- No mid curtain lock available due to tight roll up
- No finger pull slat available due to tight roll up

- Slats avail in Solid, or Perforated in P51, P11, & P21 patterns (51 is most popular)
- P51 stocked colors are anodized, white, and bronze
- P11 & P21 punch slats only stocked in anodized
- Manual rails (and EZ drive) 3-3/8" wide, Motor rails 3" wide
- Off set locks and mid curtain locks are available
- Finger pull slats are available with push up/pull down operated shutters

AL7



Screens

- Frame colors are white or bronze
- The mesh is always black so you can see through it
- No two dimensions can exceed 61". IE: 80" x 56 is good, but 65" x 65" is not
- Screens always face mount, so if you want jamb mount, add angle or build out tubes.

- Low security, mainly an exterior window treatment effective for energy and sun control
- No push up/pull down operation available
- Only shutter available with light slits

AL2-R European

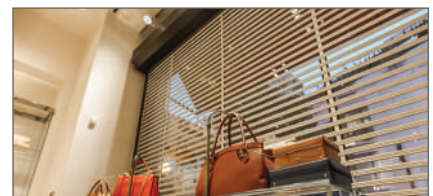


Side Folding Grilles

- Must have a structural pocket or header
- Cannot be used with drop ceilings without special preparations/blocking by others

- Manual and tube motor shutters are similar to AL7 and easy to design
- Ribs only anodized. Box, rails, and bottom slat may be any of 7 QMI colors
- External jack shaft motor systems:
Please consult QMI engineer and sales department

LX6



Transparoll

- Please consult QMI for engineering and pricing as this is our most complex product

QMI Security Solutions

1661 GLENLAKE AVE • ITASCA, IL. 60143

(800) 446-2500

International: 00 1 630 529 7111

www.qmiusa.com