

### PRODUCT SPECIFICATIONS

## Industry-Leading Protection for Your Home

#### MAXIMUM STRENGTH

Precision-engineered system with unparalleled strength to protect from forced entry threats and the strongest hurricane winds.

#### SUPERIOR AESTHETICS

Smallest shutter box in the industry across all motorized and manual models to minimize visible footprint.

#### ENHANCED OPERATION

Patented nesting design and bushing-guide system provide reliable, smooth, and quiet operation.

#### HIGH DURABILITY

Hinge and slat design reduces risk of water and sand infiltration, and provides greater resistance to dents and dings.

#### INSTALLATION FLEXIBILITY

Wide range of manual and motorized configurations to efficiently cover more openings on your home. Locking slat options to support windows, doors, patio step-downs and other application needs.

# Features Summary

## DIMENSIONS

- 24 - 236 in. (Width) (2 ft. - 19 ft. 8 in.)
- 24 - 288 in. (Height) (2 ft. - 24 in.)

## SLATS

- Solid single wall extruded 6063-T6 aluminum in 12 heights (Nesting)
- Retained in curtain with stainless steel screws with nylon shoulder bushings
- Mid-curtain slat configurations for manual operation

## GUIDE RAILS

- 6063-T6 Aluminum lined with polypropylene runners and felts
- 3-1/4 in. W Retained rail with snap cover for motorized shutters
- 3-3/4 in. W Retained rail with spring stop and snap cover for manual shutters

## BOTTOM BAR (BASE SLAT)

- Standard and low-profile (Motorized)
- Slide lock, thumbturn, and stop-bar only (Manual)

## BOX HOUSING

- Aluminum alloy in 6, 6.5, 7, and 8 in. sizes

# Options Summary

## BOX HOUSING SHAPE

- 90° angle (square), 45° angle, or round styles

## OPERATOR

- Motor
- Motor with override
- Remote (Hz) motor
- Remote (Hz) motor with override
- Battery (EZ) motor
- Manual (Spring-Assist)
- Manual (Gear)

## LOCKS

- Base Slat Slide Lock
- Base Slat Thumbturn (Key or No Key)
- Mid-curtain cylinder key

## COLORS

- White, Gray, Bronze, Beige, and Ivory. Powder and wet paint.
  - SH - Series Powder coat Per AAMA 2603-13, DFT 60 - 110 µm
  - H/S Polyester 221T2602 DuraCoat wet paint, DFT 24 - 28 µm
- Clear (Silver) and Black Anodize (Type II, Class 2, 10µm)

## MOUNT

- Wall, Trap, Build-out mounting to structure

## WARRANTY\*



\* Applies to Residential Applications only and homeowner who follows Use and Care Guidelines

## Hurricane Certifications



Florida Building Code  
(FBC) (HVHZ & non-HVHZ)  
(No. FL39156-R4)



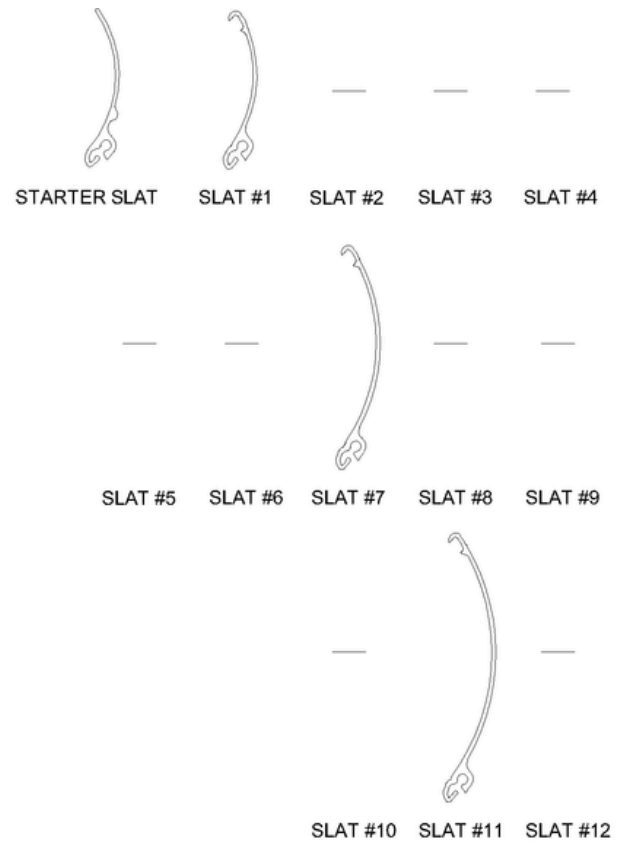
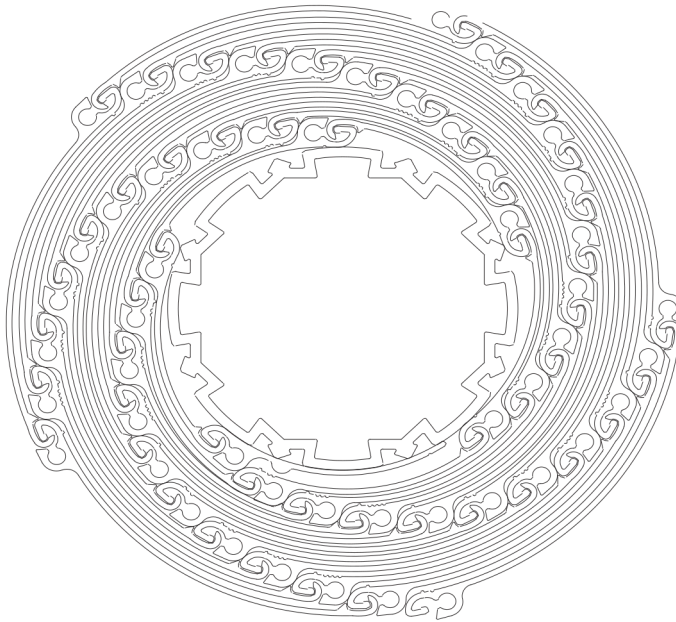
Miami-Dade (NOA)  
(No. 23-1010.06,  
23-1010.07)



Texas Department  
of Insurance (TDI)  
(No. SHU-243)

Note: Testing in accordance with TAS 201/202/203 and ASTM E330/E1886/E1996 Missile Level D

# System Details (Slats And Wrap)



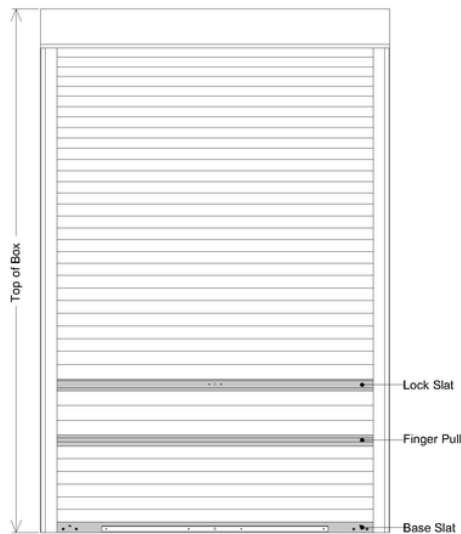
(Slats of Progressive Size)

## Nested Design with a Range of Slat Sizes

- Patented nesting and hinge design to minimize wrap size.
- Slat hinge receivers and hooks optimize for strength and bend characteristics to minimize effects of debris and environmental conditions.
- Slat sequence and number used on a given shutter will vary based on dimensions, operator and lock options chosen.

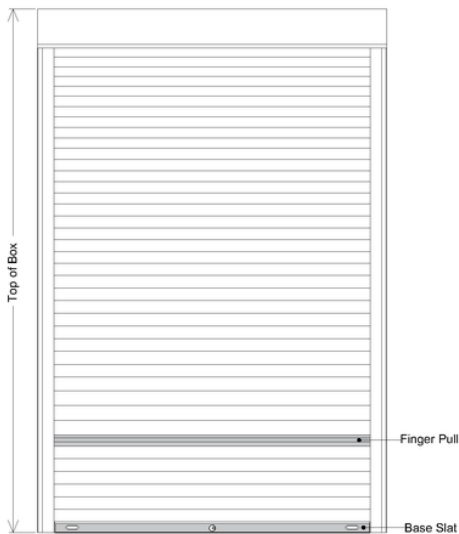
# System Details (Curtain Configurations)

## Qompact Elevation Manual (Door-Midcurtain)



Top of Box (REF)	6 in.	6.5 in.	7 in.	8 in.
	N/A	N/A	96 in.	120 in.

## Qompact Elevation Manual (Door-Thumbturn)



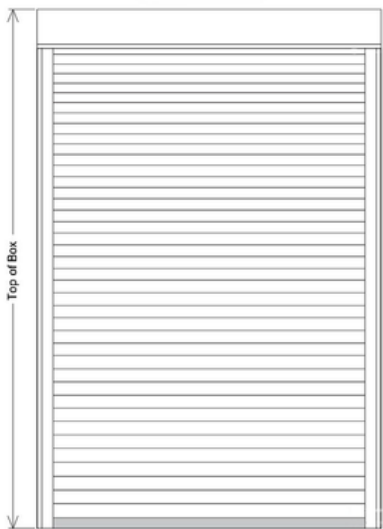
Top of Box (REF)	6 in.	6.5 in.	7 in.	8 in.
	N/A	N/A	108 in.	136 in.

## Qompact Elevation Manual (Window)



Top of Box (REF)	6 in.	6.5 in.	7 in.	8 in.
	52 in.	72 in.	108 in.	160 in.

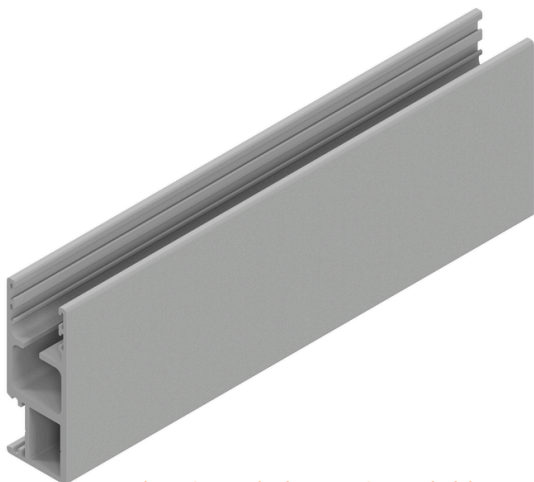
## Qompact Elevation (Motorized)



Top of Box (REF)	6 in.	6.5 in.	7 in.	8 in.
	75 in.	110 in.	147 in.	210 in.

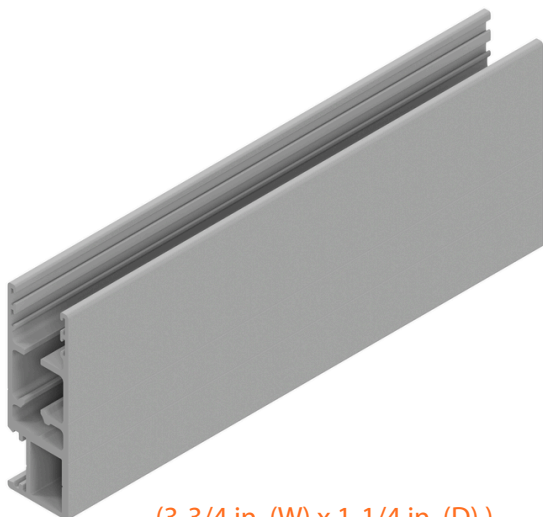
# System Details (Rails)

## Retained Rail With Snap Cover (Motorized)



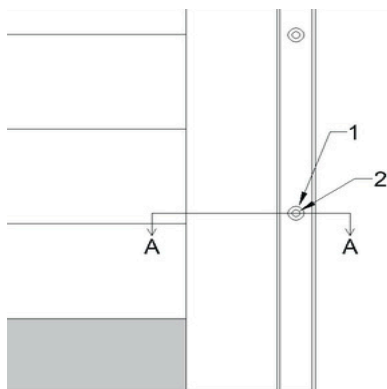
(3-1/4 in. (W) x 1-1/4 in. (D) )  
(Ref)

## Retained Rail With Snap Cover (Manual)



(3-3/4 in. (W) x 1-1/4 in. (D) )  
(Ref)

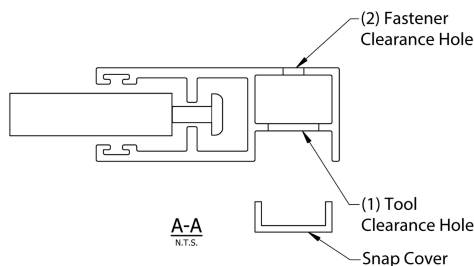
Patented rail design optimized for strength and operational performance.  
Snap cover system hides attachment fasteners, providing a smooth, clean appearance.



Holes pre-drilled for ease of installation.

On-center distance and hole pattern determined by customer requirement and/or hurricane certification requirements for substrate and target wind load design pressure.

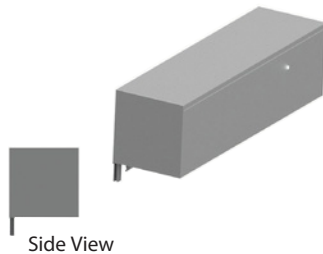
Holes are drilled through inner and outer walls to ease installation and accommodate approved fastener configurations and sizes.



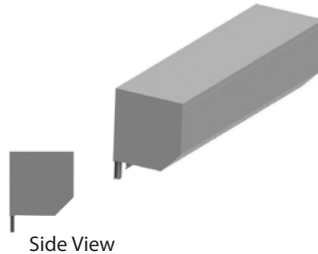
(Ref)

# Option Details (Box Housing)

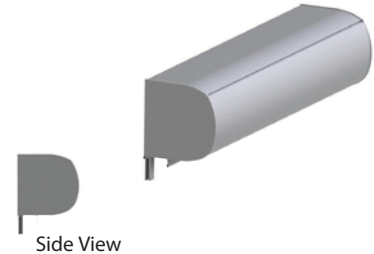
## 90° Housing



## 45° Housing



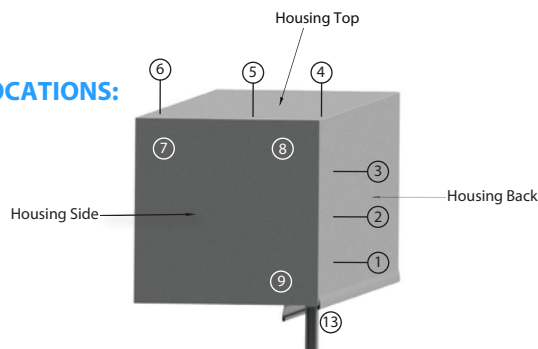
## Round (Rondelo) Housing



Housing choices to match building aesthetics.

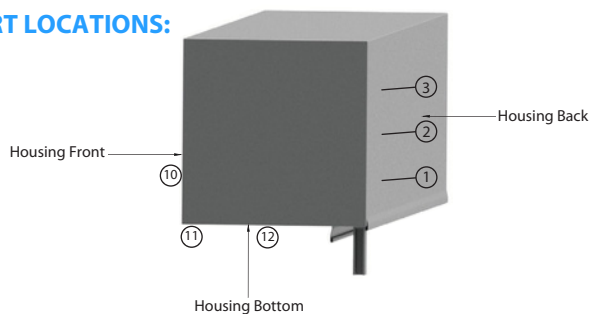
## Cable and Override / Gear Locations

### WIRE LOCATIONS:



Motor power cables can exit housing assembly in multiple locations

### OVERRIDE OR GEAR PORT LOCATIONS:



Override pole or gear crank operator can be used across most locations

(Typ: Reference Housing Detail)

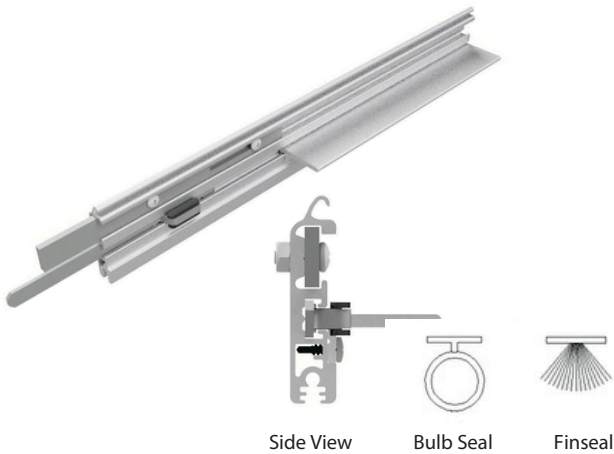
Shutter system provides flexibility in power and pole locations to aid in installation and optimize aesthetics across range of opening and mounting types.

Note: Locations 1, 2, and 13 not available on large shutters with required reinforcement (>36 sq.ft. gear, >65 sq.ft. motor)



# Option Details (Locks)

## Slide Lock



(Typ: Window, Kneewall)

## Thumbturn Lock



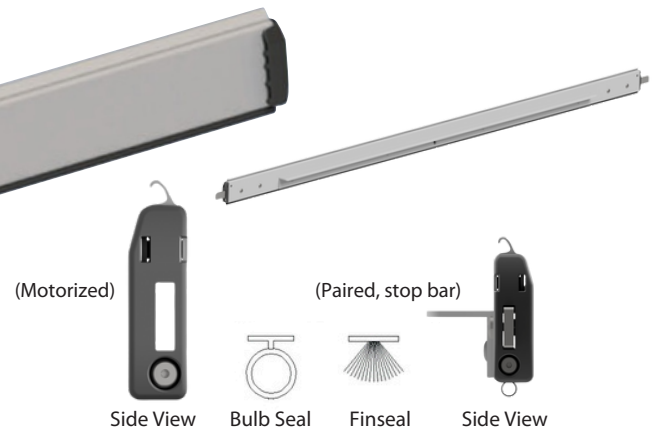
(Typ: Exit Door, Floor Level)

## Mid-Curtain Lock Slat



(Typ: Residential Sliding Door, Window, Special)

## General Base Slat



(Typ: Motorized or paired with mid-curtain lock)

Patented lock slat designs provide locking functionality for various manual shutter use cases. Retractable mechanisms on some configurations for easy installation and ongoing shutter maintenance. Felt and bulb seals provided on the bottom of locking base slats per application requirement.

# Option Details (Operators and Colors)

## Operators



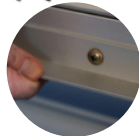
### MANUAL (GEAR)

Gear operation with crank pole for precise manual control.



### MANUAL (STRAP)

Strap-box operation for speed and tight space activation.



### MANUAL (SPRING-ASSIST)

Manual operation for simplicity and cost.



### MOTOR (WIRED) IN STANDARD AND OVERRIDE OPTIONS

Wall switch activation for day to day reliability.



### BATTERY (EZ) MOTOR AND MOUNTING BRACKETS

Low voltage battery operated for minimal wiring and maximum flexibility.



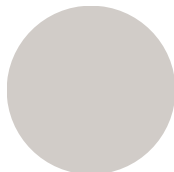
### WIRELESS REMOTE MOTOR IN STANDARD AND OVERRIDE OPTIONS

Remote operation and integration with home automation systems.

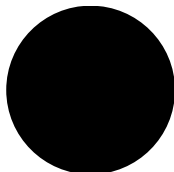


Motorized and manual operators to meet various applications and opening types. QMi partners with industry-leading motor manufacturers, including Somfy® and OZ Roll® to offer the highest-quality drive and software systems.

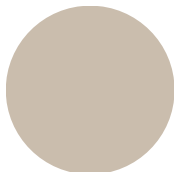
## Colors and Finish



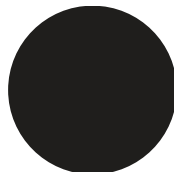
Clear Anodized (Silver)



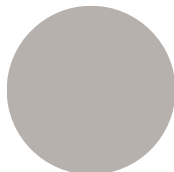
Black Anodized



Beige



Bronze



Gray



Ivory



White



Custom

Powder coat and wet paint options for both standard and custom colors are available. Contact your QMi Sales or Customer Service Representative for pricing and lead times on custom colors.

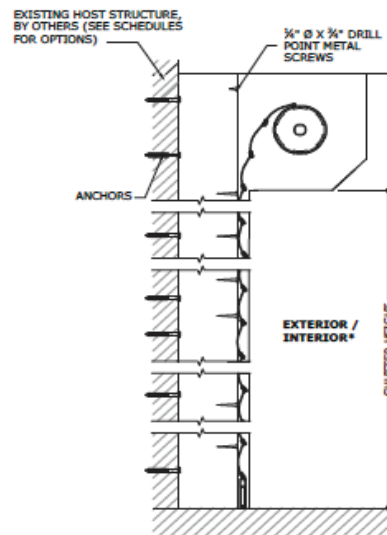


# Option Details (Mounting)



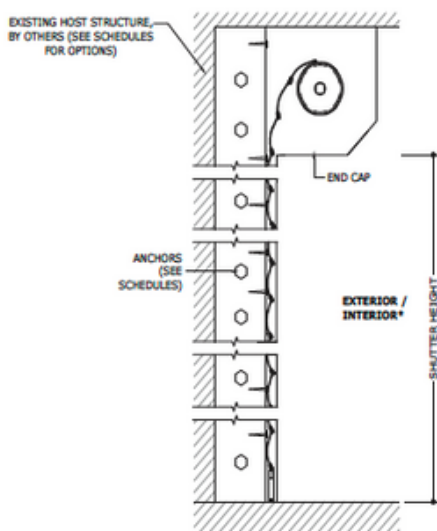
System designed for rapid stand-up and mounting to range of substrates in multiple configurations.

## Build-Out Mount



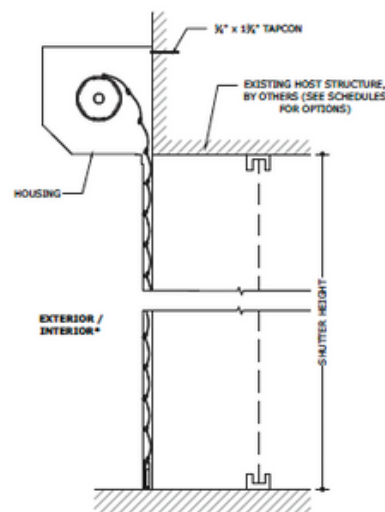
Mounting to supplemental (provided) build-out structure for strength or clearance.

## Trap Mount



Mounting within opening on existing structure to minimize shutter protrusion.

## Wall Mount



Mounting directly to wall outside or beyond opening.

Note: Additional details and schedules found in Hurricane Approvals