



## Strong Shutters With Practical Clarity

### SOLID VISIBILITY

Clear polycarbonate panels offer high transparency.

### SUPERIOR STRENGTH

Resilient design provides a robust barrier against potential security threats, with slats and couplers bringing re-enforced strength.

### DEPENDABLY DURABLE

Couplers, slats, and rails optimized for durability.

### LIGHTWEIGHT FLEXIBLE DESIGN

3 ft wide polycarbonate sections with vertical tracks create a feather-light shutter, manually operable for up to 110 sq ft.

### ADAPTABLE OPERATION

Tubular and jackshaft operator options maximize adaptability to your needs.

# Features Summary

## DIMENSIONS

- 24 - 234 in. (Width) (2 - 19.5 ft.)
- 24 - 174 in. (Height) (2 - 14.5 ft.)

## CURTAIN MAKEUP

- Polycarbonate inserts for visibility (36 in.)
- Extruded 6063-T5 aluminum coupler hinges and vertical connector links

## CLEAR SLAT PANELS

- Clear polycarbonate inserts, secured between horizontal coupler hinges.

## GUIDE RAILS

- 6063-T5 aluminum extrusion lined with insulating woven polypropylene runners.
- Solid and snap cover configurations

## BOTTOM BAR (BASE SLAT)

- Standard (motorized)
- Slide-lock and thumbturn (manual)

## BOX HOUSING

- Aluminum alloy in 7, 8, 10, and 12 in. sizes

# Options Summary

## BOX HOUSING SHAPE

- 90° angle (square), 45° angle, or round styles

## OPERATOR

- Manual (Gear) crank operation for openings up to 50 sq ft.
- Manual (Spring-assist) for openings up to 110 sq ft.
- Tubular motor for openings up to 140 sq ft.
  - Wall switch, remote (HZ) options
  - Standard or override options
- Jackshaft motor for large openings up to 280 sq ft.

## LOCKS

- Base Slat thumb turn (key or no key)
- Base Slat slide lock
- Motor brake (motorized)

## COLORS

- Clear Anodized (Silver) for shutter curtain and couplers. (Type II, Class 2, 10µm)
- White, Gray, Bronze, Beige, and Ivory powder and wet paint for other components. (housing, rails, and base slats)
  - SH - Series Powder coat Per AAMA 2603-13, DFT 60 - 110 µm)
  - (H/S Polyester 221T22602 DuraCoat wet paint, DFT 24 - 28 µm)
- Clear Anodized for other components

## MOUNT

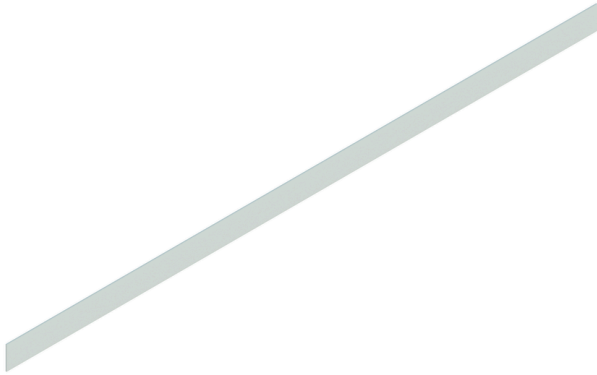
- Wall, buildout, and trap mounts.

## WARRANTY



\*Applies to Commercial Applications only and customers who follow Use and Care Guidelines

# System Details (Slats and Couplers)



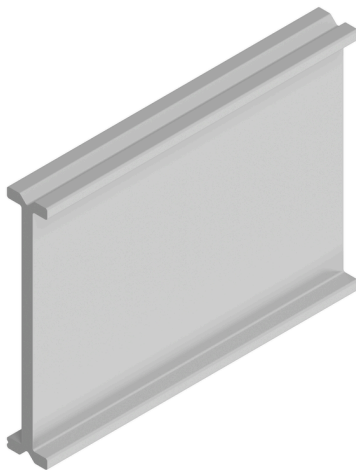
(1-13/16 in. (H) x 36 in. (L))

Polycarbonate inserts provide system clarity.

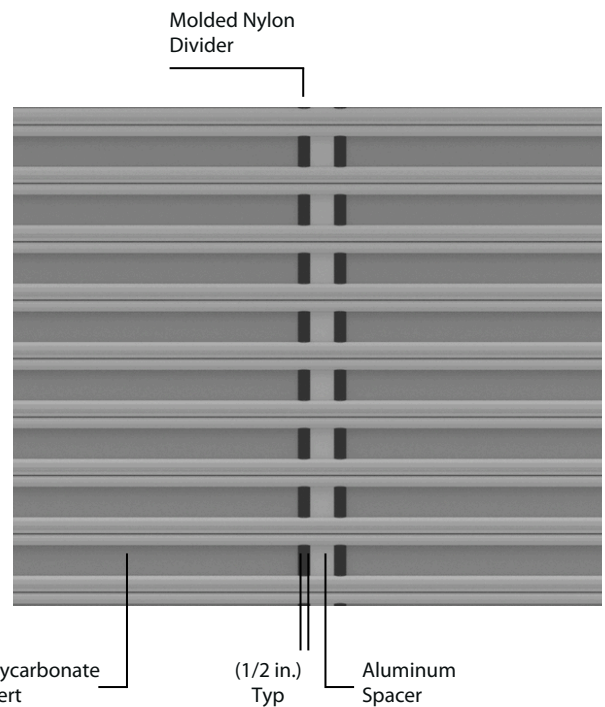


(2-5/8 in. (H) x 7/16 in. (T))

Engineered couplers provide durability and smooth operation.



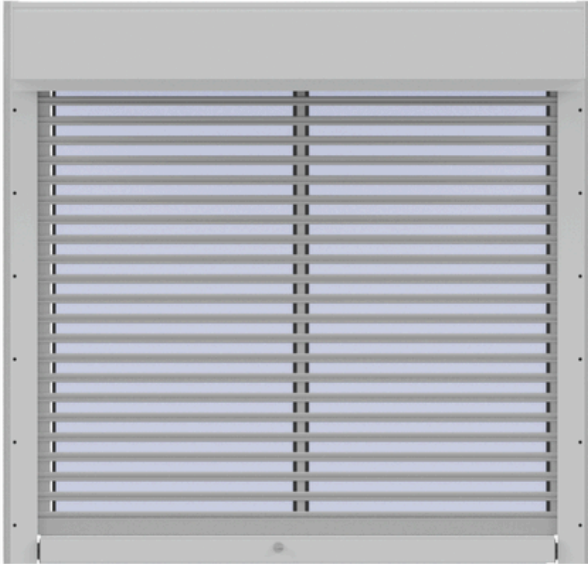
Vertical aluminum spacers provide strength and rail-edge wear resistance.



Curtain assembled with multiple components to provide visibility, strength and durability.

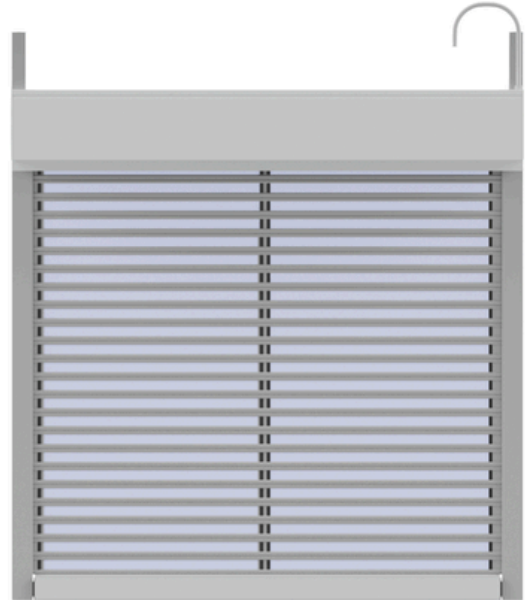
# System Details (Curtain Configurations)

## LX6 Elevation (Manual)



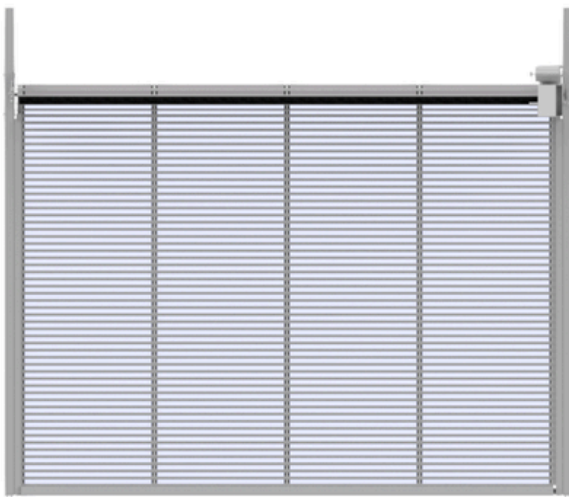
(Typ: Below ceiling)

## LX6 Elevation (Motorized - Tubular)



(Typ: Below ceiling)

## LX6 Elevation (Motorized - Jackshaft)

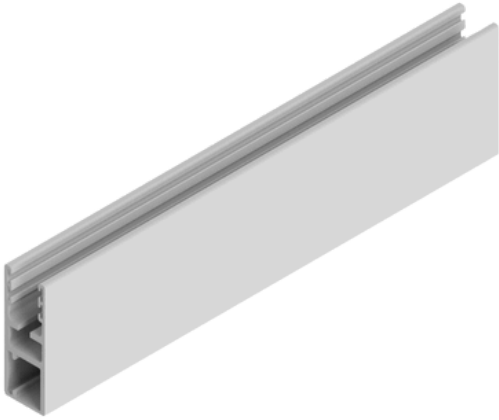


(Typ: Above ceiling)

- Consistent slat configurations throughout the curtain
- No finger pull on manual shutter configurations
- Base slats designed for strength across all configurations, narrow – to wide-span
- Jackshaft typically installed above ceiling without housing or with a custom solution

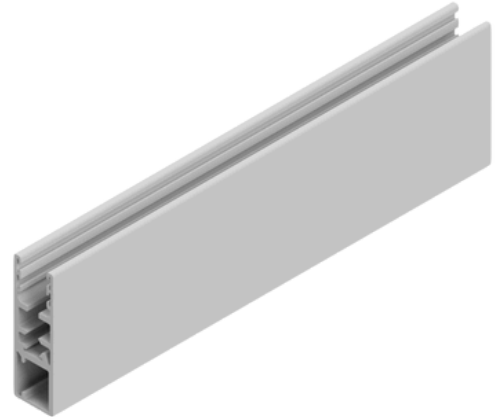
# System Details (Rails)

## Retained Rail (Solid, Motorized)



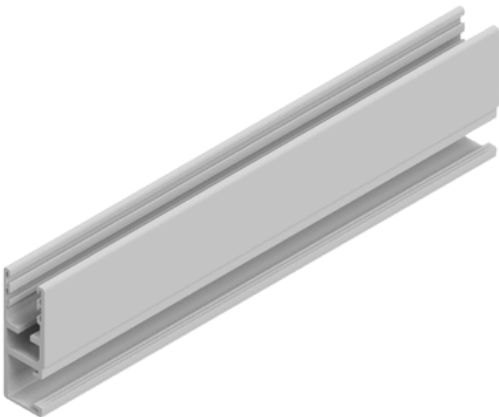
(3 in. (W) x 1-1/8 in. (D))

## Retained Rail (Solid, Manual)



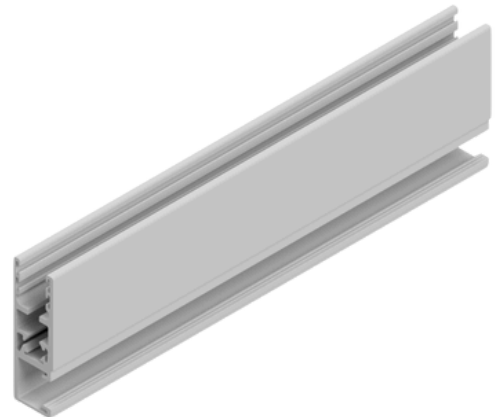
(3-3/16 in. (W) x 1-1/8 in. (D))

## Retained Rail (Motorized, Snap Cover)



(3 in. (W) x 1-1/8 in. (D))

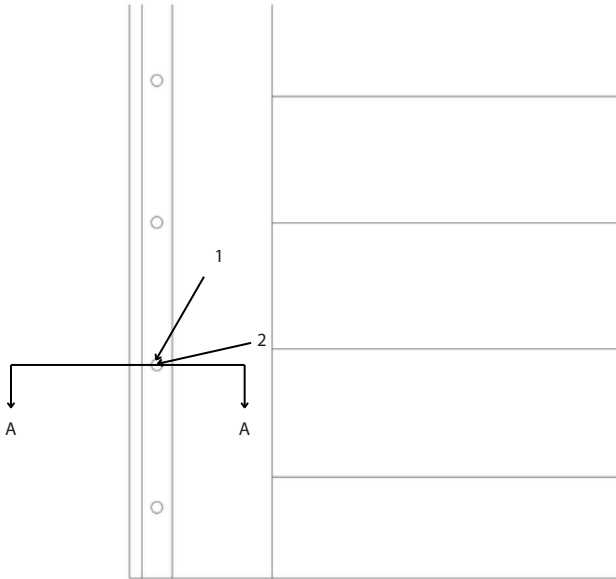
## Retained Rail (Manual, Snap Cover)



(3-3/16 in. (W) x 1-1/8 in. (D))

Patented rail design optimized for strength and operational performance.  
Jackshaft operator configurations use 2-5/8 in. (W) rail (not shown)

# System Details (Rails Continued)

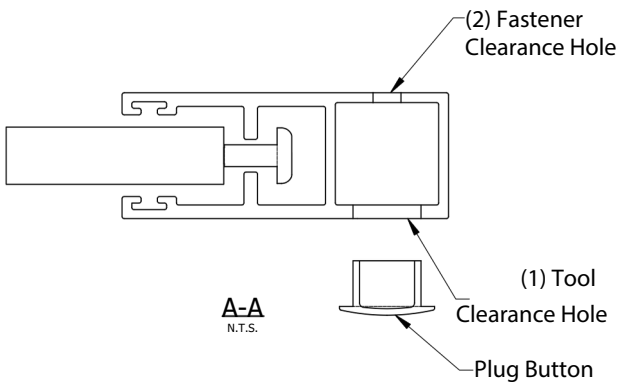
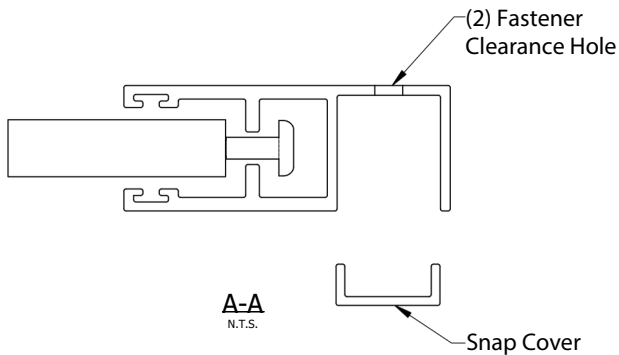


Holes pre-drilled for ease of installation.

On-center distance and hole pattern determined by application.

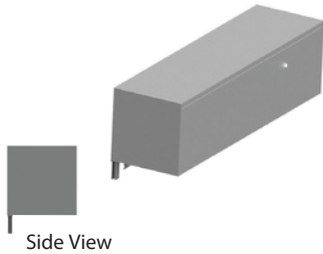
Holes are drilled through inner and outer walls to ease installation and accommodate approved fasteners on solid rails. Plug buttons are used to cover drill holes.

On snap cover rails, fasteners holes are drilled and covered with a pre-cut cap for a smooth aesthetic.

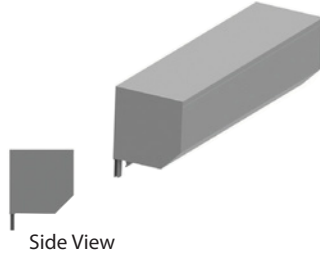


# Option Details (Box Housing)

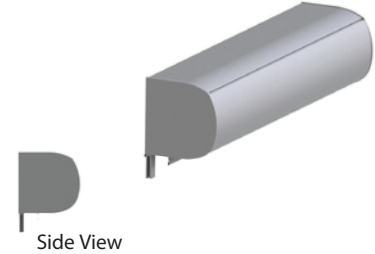
## 90° Housing



## 45° Housing



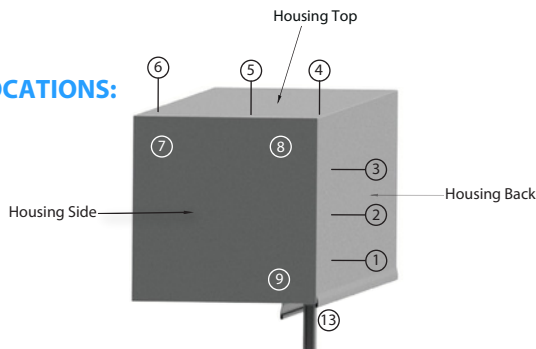
## Round Housing



Housing choices to match building aesthetics.

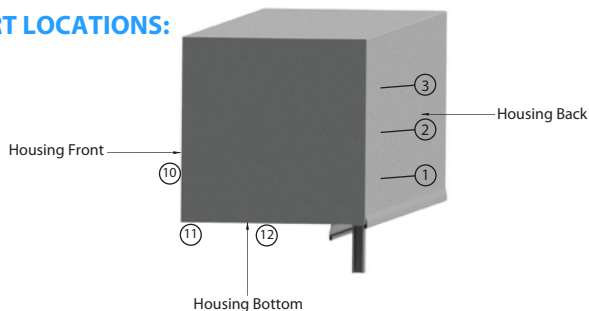
## Cable and Override / Gear Locations

### WIRE LOCATIONS:



Motor power cables can exit housing assembly in multiple locations

### OVERRIDE OR GEAR PORT LOCATIONS:



Override pole or gear crank operator can be used across most locations

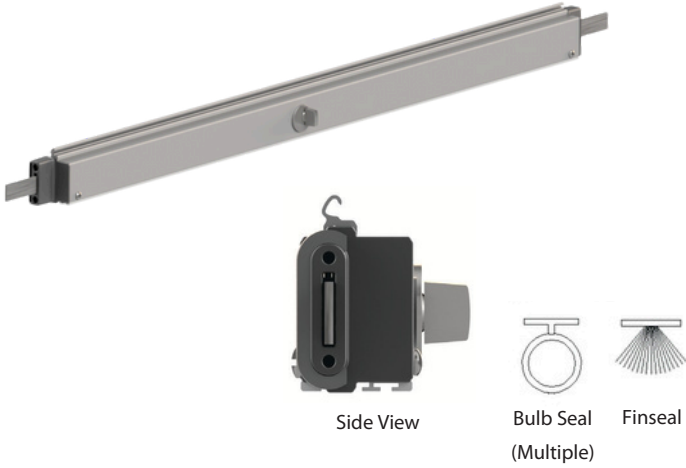
(Typ: Reference Housing Detail)

Shutter system provides flexibility in power and pole locations to aid in installation and optimize aesthetics across various opening and mounting types.

Note: Locations 1, 2, and 13 not available on large shutters with required reinforcement (>36 sq.ft. gear, >65 sq.ft. motor)

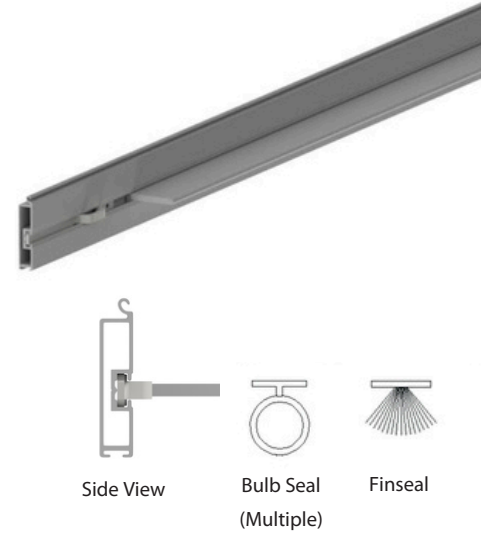
# Option Details (Locks)

## Thumbturn Lock



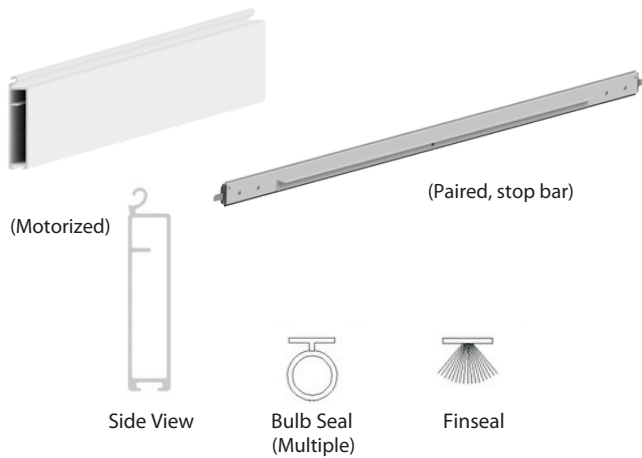
(Typ: Floor level)

## Slide Lock



(Typ: Window, Knee-wall, counter)

## General Base Slat



(Typ: Motorized or Gear / Crank)

- Lock slat designs provide functionality for a range of manual shutter use cases.
- Motorized (general) slat provides curtain stability and locks with motor brake or gear mechanics.
- Felt and bulb-seals provided on bottom of base slats per application requirement.



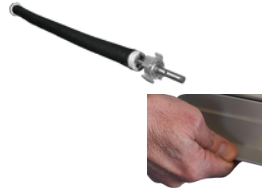
# Option Details (Operators and Colors)

## Operators



### GEAR / CRANK

Manual operation for simplicity and cost (up to 50 sq. ft.)



### MANUAL (SPRING-ASSIST)

Manual operation for simplicity and cost (up to 110 sq. ft.)



### TUBULAR MOTOR (WIRED) IN STANDARD AND OVERRIDE OPTIONS

Wall or key switch activation for day-today reliability (up to 140 sq. ft.)



### TUBULAR MOTOR (WIRELESS) REMOTE IN STANDARD AND OVERRIDE OPTIONS

Remote operation for employee flexibility (up to 140 sq. ft.)



### JACKSHAFT MOTOR

Wall or key switch for large shutters and above-ceiling installation (up to 280 sq. ft.)

Motorized and manual operations to meet various applications and opening types. QMi partners with industry-leading motor manufacturers like Somfy® to offer the highest quality drive systems.

## Colors and Finish

### CURTAIN

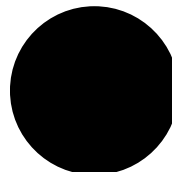


Clear Anodized  
(Silver)

### OTHER COMPONENTS (RAIL, HOUSING, BASE SLATS)



Clear Anodized  
(Silver)



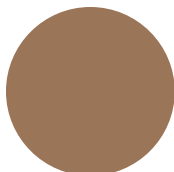
Black Anodized



Beige



Gray



Brown



Ivory



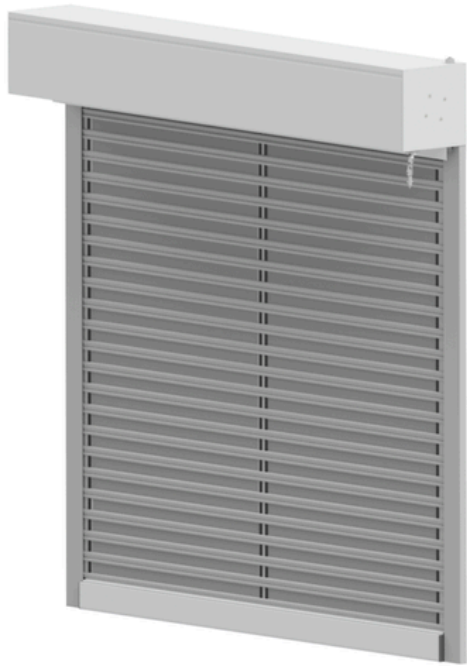
White



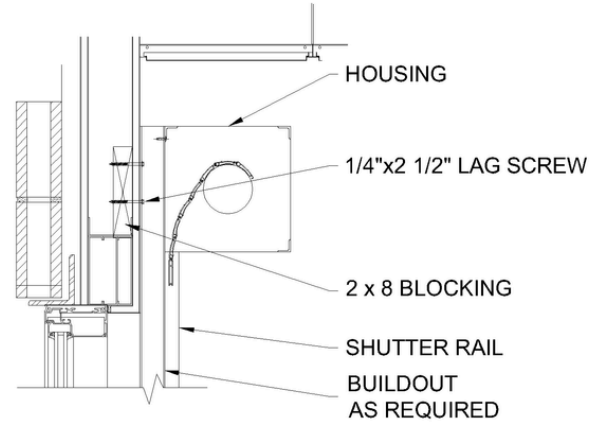
Custom

Powder coat and wet paint options for both standard and custom colors are available. Contact your QMi Sales or Project Support Representative for pricing and lead times on custom color options.

# Head Details, Below the Ceiling (Mounting)



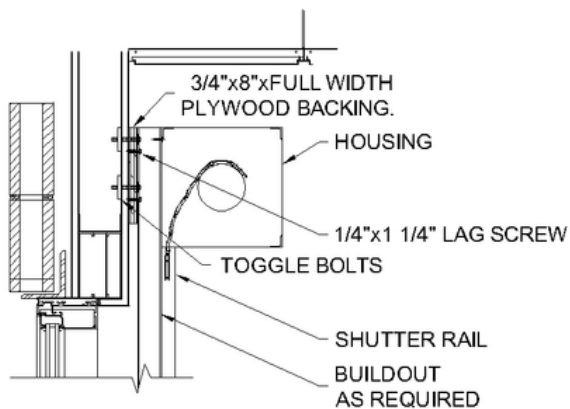
## On Framing with Blocking



System designed for rapid stand-up and mounting to a range of substrates in multiple configurations.

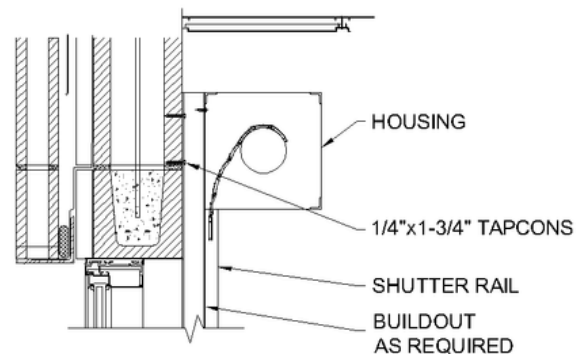
Mounting to supplemental (provided) build-out structure for strength or clearance.

## On Framing



Mounting to framing directly with plywood backer for stability (not provided)

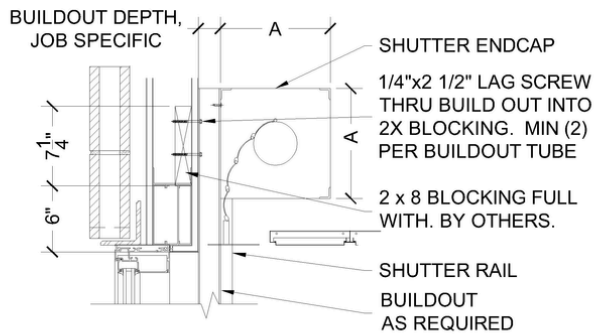
## On Block



Mounting to block with buildout as required.

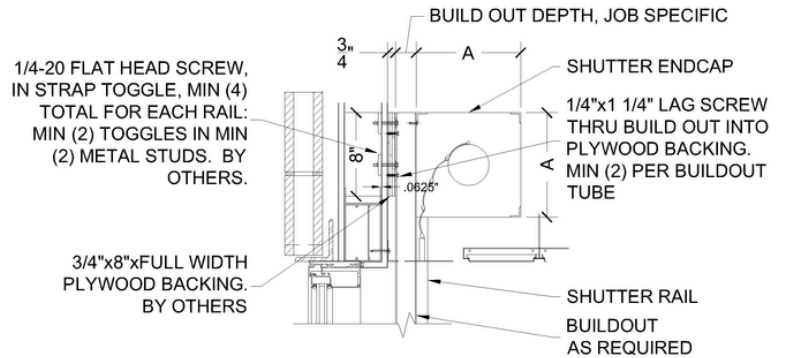
# Head Details, Above the Ceiling (Mounting)

## On Framing with Blocking (Above Ceiling)



Mounting to supplemental (provided) build-out structure above ceiling

## On Framing (Above Ceiling)



Mounting to framing directly with plywood backing for stability above ceiling (not provided)