



Free Standing and Built-in Product Security

UNCOMPROMISING STRENGTH

Steel and aluminum construction keeps merchandise safe from intruder attacks.

STORAGE FLEXIBILITY

Configure your cabinets for specific application needs with a wide range of shelf, size, and color options.

MODULAR ADAPTABILITY

In addition to free standing cases, QMi can integrate modular/custom casework into your merchandise floor or back room to protect valuable product.

Features Summary

DIMENSIONS

- 42 in. (w) x 84 in. (h) x 20 in. (d) in 4-shelf configurations (standard)
- 35.5 / 47.5 in. (w) x 66 in. (h) x 15 in. (d) in 2-shelf configurations (standard)

CABINET MATERIAL

- 18-gauge steel cabinet for strength

SLATS

- Solid single wall extruded 6063-T6 aluminum profile
- Retained in rails with stainless steel fasteners and nylon bushings
- Punched configurations for visibility or airflow

GUIDE RAILS

- 6063-T6 aluminum lined with polypropylene runners and felts
- 3 in (w) retained rail for free standing cases
- 3-1/4 or 3-3/4 in. (w) retained rail may be used as alternate for modular custom casework

BOTTOM BAR (BASE SLAT)

- Base slat thumb turn (keyed) standard

Options Summary

CUSTOM DIMENSIONS

- Custom sizes and case-top configurations available (flat, sloped)

OPERATOR

- Manual (spring assist)
- Motor (modular only)
- Remote (HZ) motor (modular only)

LOCKS AND SLATS

- Base slat thumb turn (key) (manual)
- Mid-curtain cylinder key (manual)
- Finger-pull slat available to aid open/close (manual)
- Motor brake (modular only)

SHELVES AND BACKS

- Flexible shelving options in 2-, 4-, or custom count
- Solid or punched back for merchandising hooks. (separately)

LIGHTING

- Powered lighting options available in select applications

WARRANTY*

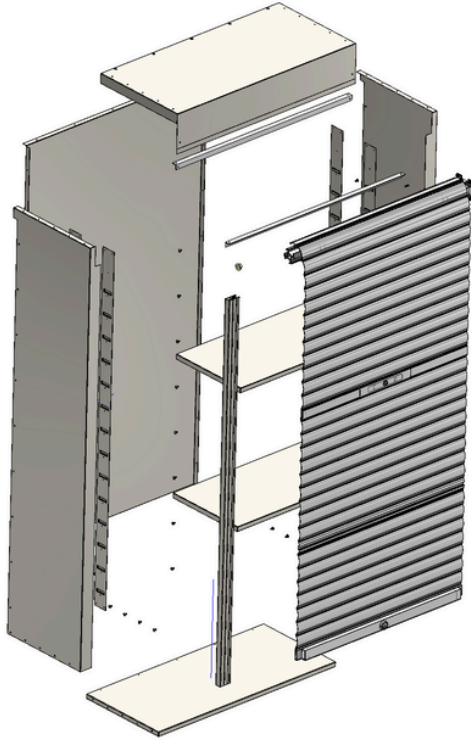


*Applies to Commercial applications only and customers who follow Use and Care Guidelines

Motor warranty only available for modular/custom casework (if used)

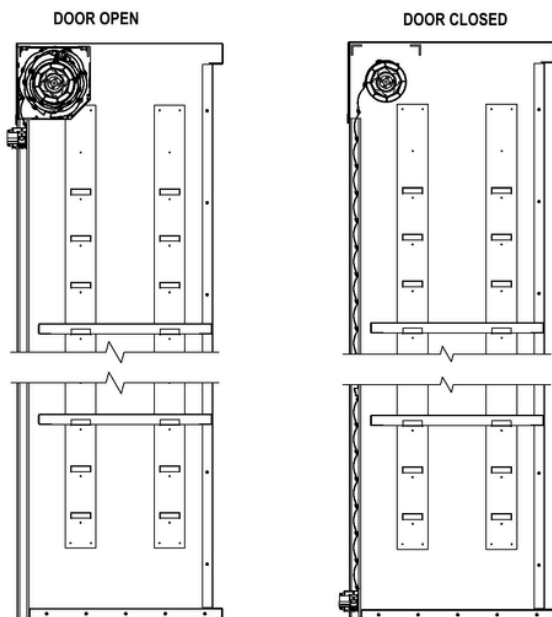
System Details (Case and Assembly)

Case Construction



- Free standing case assembled from 18 gauge precision formed steel
- Shutter assembly (rails and curtain) added during case completion
- Modular/custom casework leverages select components to integrate into onsite structure (application specific)

Shutter Wrap

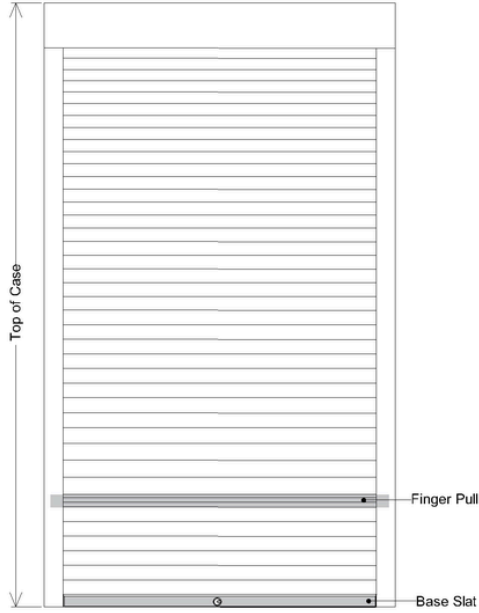


(Typ: End Cap Shown)

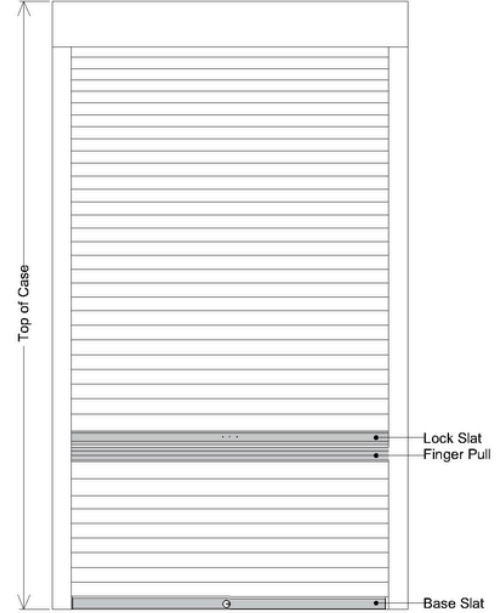
- Shutter protects front of the security case, wrapping discretely into a coil hidden in front
- QMi's industry-smallest wrap maximizes interior space and aesthetics
- Shutter coil mounted to end-cap / angle, but no housing is used
- Base slat rests neatly at top of opening with the case open, locking into the bottom of the case when closed (free standing)
- Curtain and locking approach varies for modular/custom casework

System Details (Curtain Configurations)

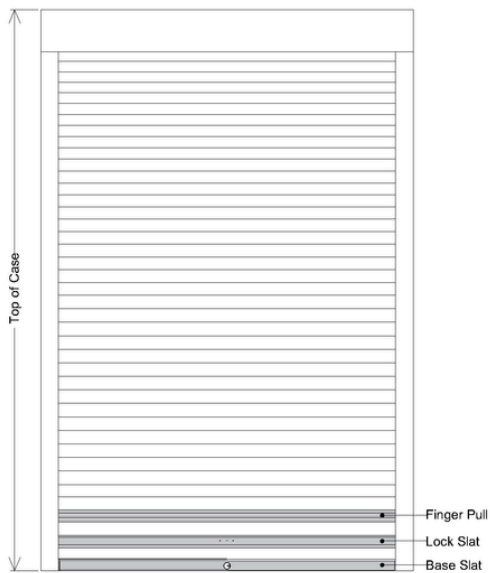
Free Standing Case Elevation (Manual Thumbturn)



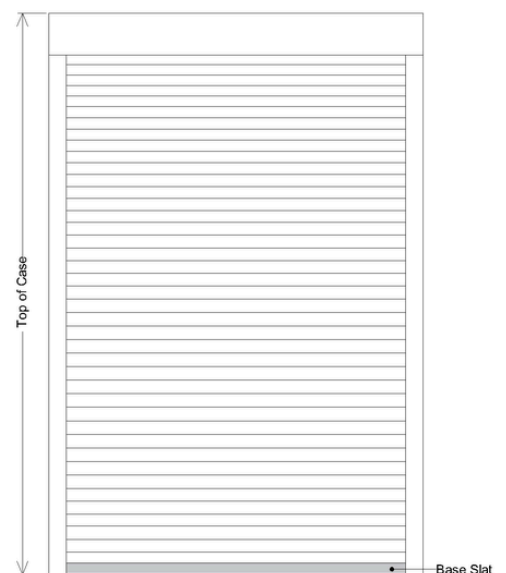
Free Standing Case Elevation (Manual Midcurtain)



Modular/Custom Elevation (Manual)



Modular/Custom Elevation (Motorized)



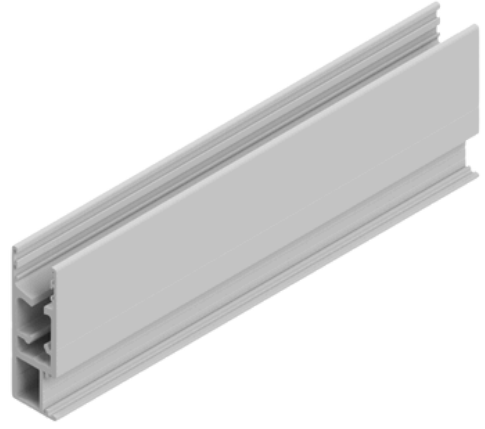
System Details (Rails)

Retained Rail Motorized (Modular/Custom)



(3-1/4 in. (w) x 1-1/4 (D))

Retained Rail Manual (Modular/Custom)



(3-3/4 in. (w) x 1-1/4 (D))

- **Patented rail designs optimized for strength and high-cycle performance**
- **Rails for free standing cases different than for modular/custom casework (3 in. (w) x 1-1/8 (D))**

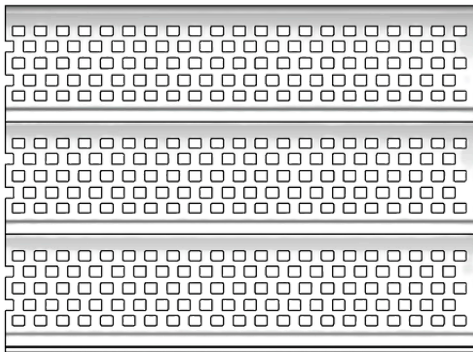
Option Details (Punch Patterns)

Standard Slat



- System designed around a standard slat
- Optimized hook, receiver, and tube mechanism for cases
- Solid and punched options are available

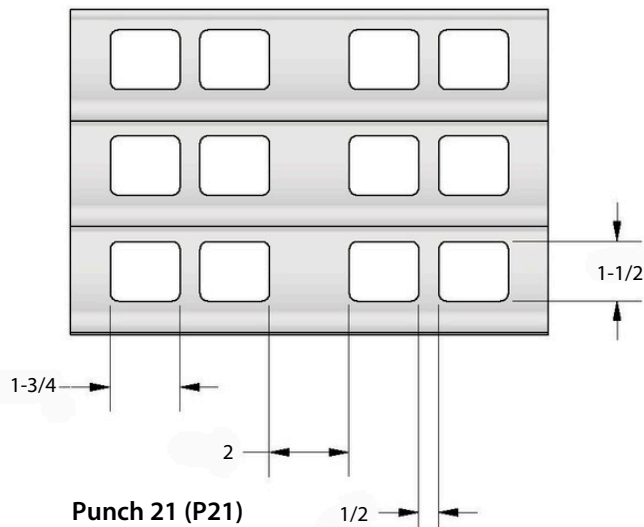
Primary



Punch 51 (P51)

- High-visibility punch pattern used to make merchandise or inventory items still visible when case closed
- Provides strength and visibility

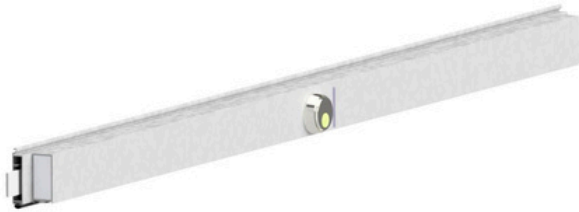
Secondary



- Medium opening pattern used to provide visibility and high airflow for unique applications
- Hole patterns centered left-to-right on slat for maximum visual continuity
- Punch patterns available in both free standing and modular/custom casework configurations

System Details (Locks)

Keyed Cylinder Base Slat



Side View



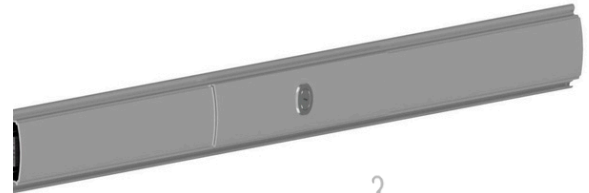
Bulb Seal
(Multiple)



Finseal

(Typ: Free Standing)

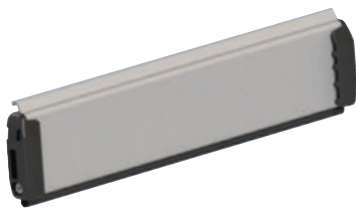
Mid-Curtain Lock Slat



Side View

(Typ: Free Standing)

General Base Slat (Motor Brake)



Side View



Bulb Seal
(Multiple)



Finseal

(Typ: Modular / Custom Casework)

- Patented lock slat designs provide lock up functionality for range of case uses
- Free standing and modular / custom casework specific configurations may vary based on application

Option Details (Operators and Colors)

Operators (Modular / Custom Casework Only)



STANDARD MOTOR (WIRED)

Wall or key switch activation for daily reliability.



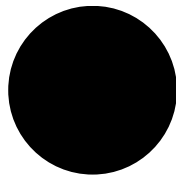
WIRELESS REMOTE MOTOR IN STANDARD AND OVERRIDE OPTIONS

Remote operation and integration with home automation systems.

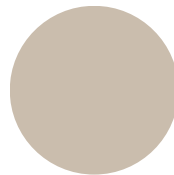
Colors and Finish



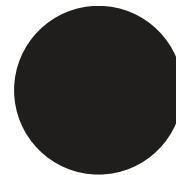
Clear Anodized
(Silver)



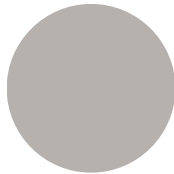
Black
Anodized



Beige



Bronze



Gray



Ivory



White

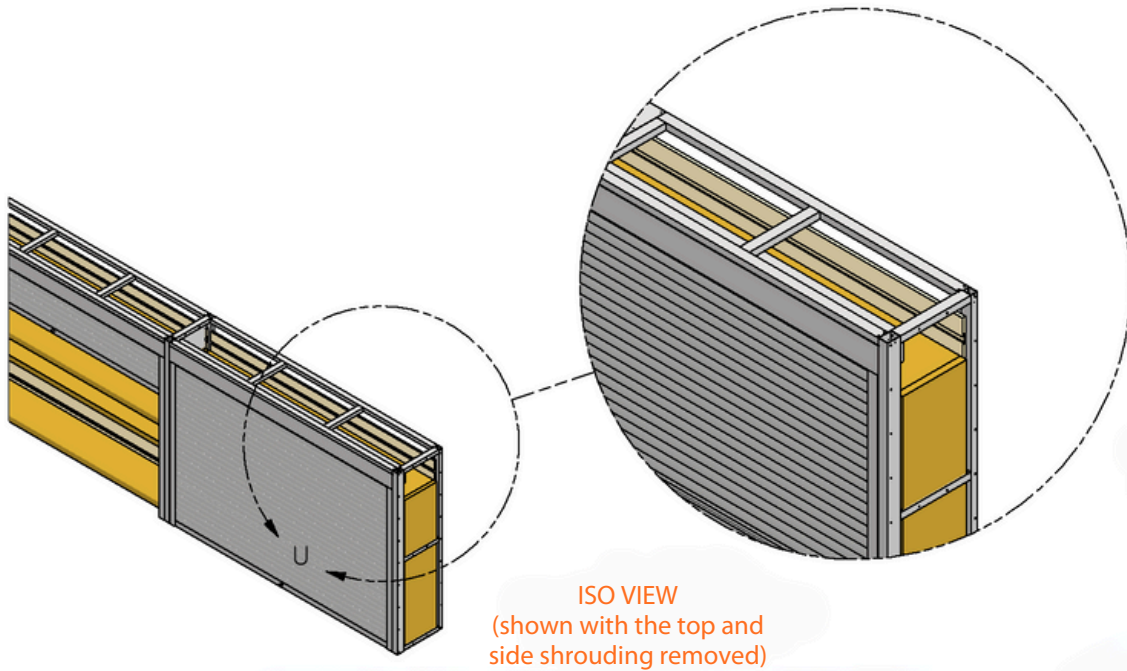


Custom

Powder coat and wet paint options for both standard and custom colors are available (curtain).
Standard free standing case color is gray, custom colors are available.

Contact your QMi Sales or Project Support Representative for pricing and lead times on custom color options.

Modular Example



- Modular structural assemblies engineered for simple fit and rapid installation, configured to meet customers application needs
- Interior structural mounting to building, varies by job

