

PRODUCT SPECIFICATIONS



Fortified Window Screens for Maximum Safety

ROBUST PROTECTION

With strength to stop forced entry attack and hurricane flying debris, QMi stainless screens are perfect choice to protect your property.

UNCOMPROMISED VIEWS

High-tensile 304-grade always-black mesh designed for optimal clarity, allowing occupants to see through effortlessly - inside and out.

FLEXIBLE CONFIGURATIONS

Available in fixed and code-compliant operable egress configurations, our screens meet all opening needs.

STYLISH SECURITY

Engineered for subtle elegance, the low-profile aluminum frame fits building contours and is fabricated to integrate with your aesthetic design.

CUSTOMIZED AND COMPLIMENTARY

Tailor-made to fit your specific window size and shape, making them a perfect fit to enhance security and appeal for any window.

Features Summary

MAIN FRAME AND SUB-FRAME/SASH

- 6005-T5 extruded aluminum alloy frame, with 6061-T6 aluminum alloy corner key
- 2-7/16 in. (W) x 1-1/8 in. (D) fixed frame
- 3-3/4 in. (W) x 2-13/16 in. (D) operable egress frame
- Minimum tensile strength of 22,000 lbs. per sq. in.
- Maximum size 61.5 in. x 144.5 in. OA (fixed) and 61.5 in. x 98 in. OA (operable egress)

WIRE MESH

- High tensile 304 stainless steel mesh with 12 x 12 strands per in. (standard)
- 1 in. mesh retention to frame at 90°

MULLIONS

- Used on operable egress screens only, 54 in. (H) or taller
- 6063-T5 extruded aluminum tube

HINGES AND OTHER

MISCELLANEOUS HARDWARE

- Hinges used on openable egress only, 6005-T5 aluminum
- All other hardware is aluminum, stainless steel or coated corrosion-resistant steel (no plastic parts)

Options Summary

WIRE MESH

- High-tensile 304 stainless heavy duty available (custom, lead time)

FRAME SHAPES

- Arch, polygon, round (min 38 in. diameter)
- Other custom shapes available

FRAME COLORS

- White, bronze, beige powder (SH-series powder coat per AAMA 2063-13, DFT 60-110µm)
- Custom powder or wet paint available

MOUNT

- Face mounted to structure or buildout

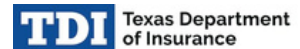
WARRANTY



Certifications



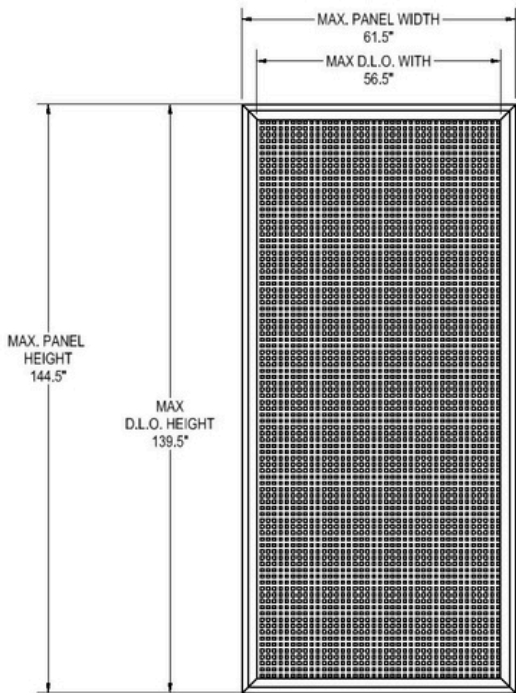
Florida Building Code
(FBC) (HVHZ & non-HVHZ)
(No. FL16123-R5)



Texas Department of Insurance (TDI)
(3rd Party Evaluation)

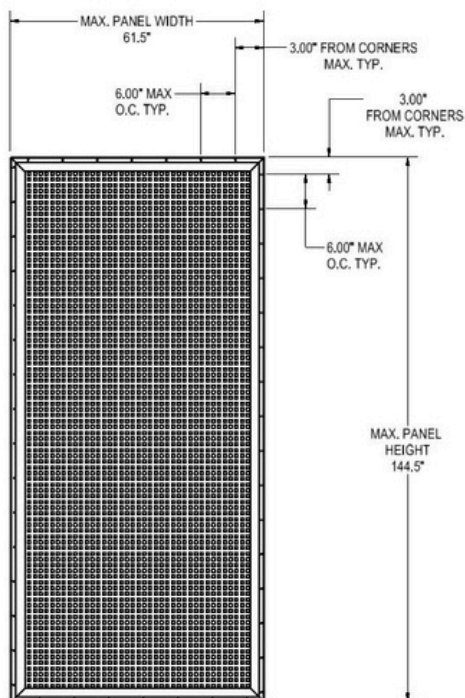
System Details (Fixed, Panel View)

Exterior Elevation



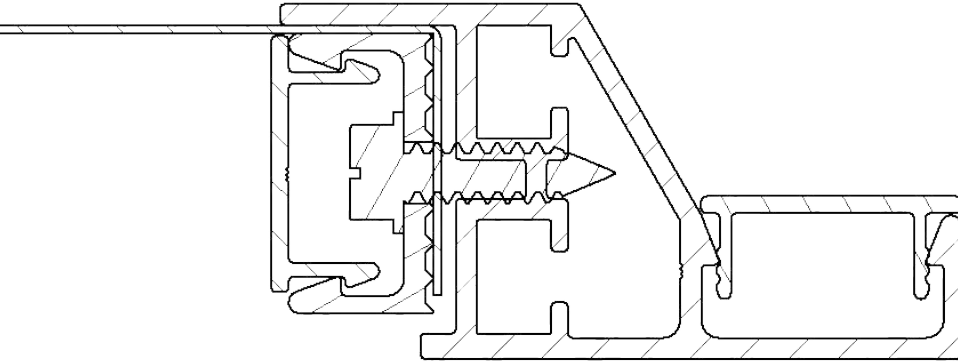
(3D View, External Elevations)

Screen Frame and Anchoring



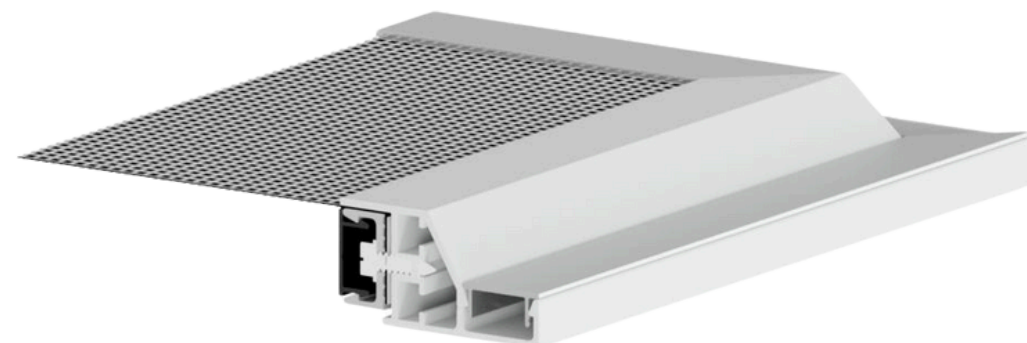
- System designed to attach to concrete, masonry, and wood framing.
- Fastener spacing and type requirements for hurricane applications per approved documents.
- Snap cover used to cover fasteners and provide clean surface aesthetic that blends with architecture.

System Details (Fixed, Assembly View)



(Assembly 2D)

- Three (3) primary elements to system - frame, wire retainer, and cap
- Assembly components (ex-cover) provided as a system for installation
- Holes pre-drilled to speed in-field work
- Snap cover (post-fastening/attachment) complete the install

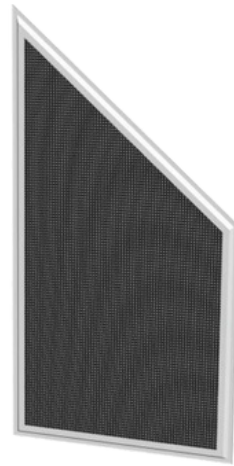


(Assembly 3D)

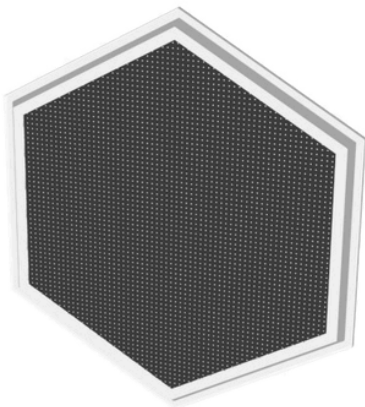
System Details (Fixed, Shapes)



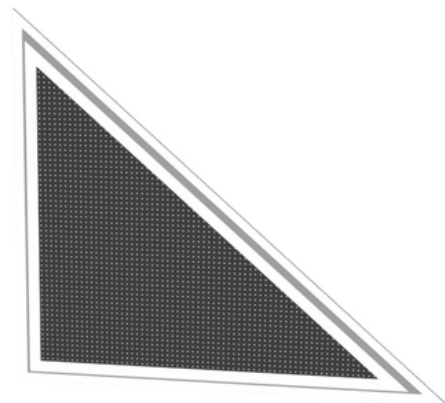
Arch



Polygon (ref)



Hexagon (ref)



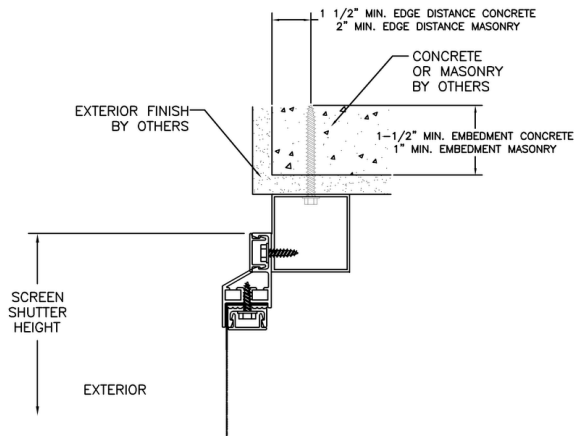
Triangle (ref)



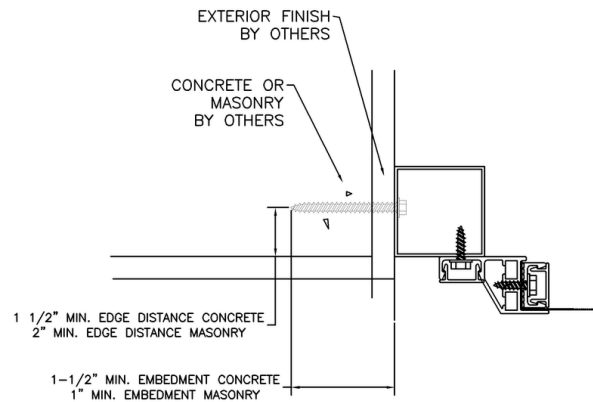
Round

- Wide range of shapes and custom configurations available on fixed screens
- Lead time may vary depending on configurations

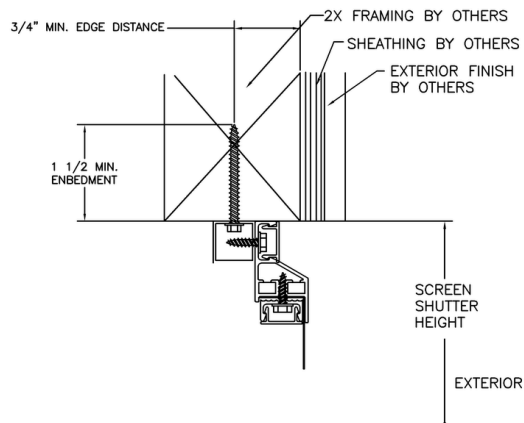
System Details (Fixed, Mounting)



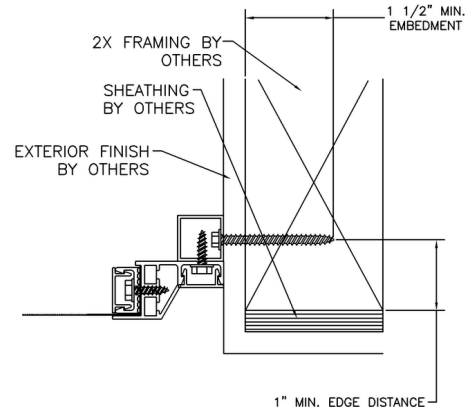
(Buildout, Recessed Surface Mount)
[CMU]



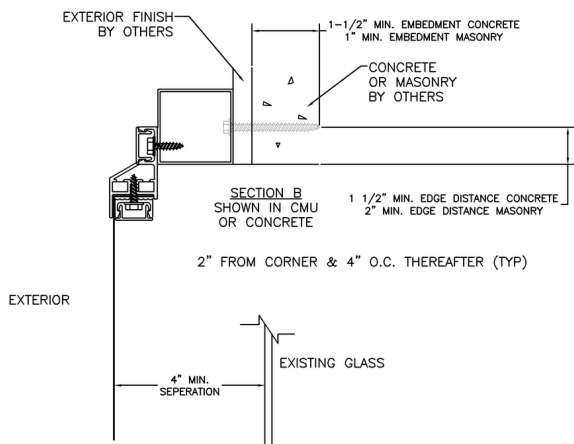
(Buildout, Trap Mount)
[CMU]



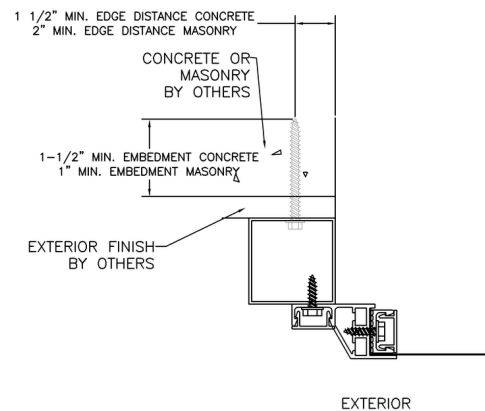
(Buildout, Recessed Surface Mount)
[Wood]



(Buildout, Trap Mount)
[Wood]

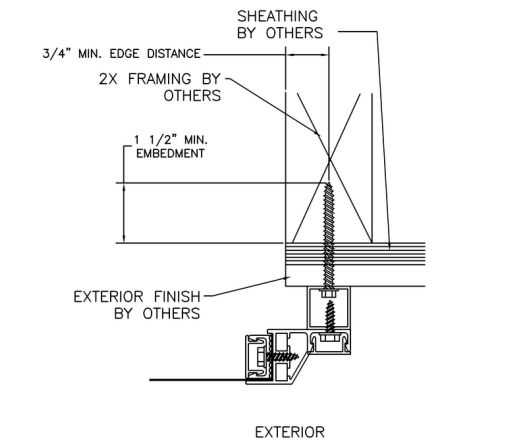


(Buildout, Horizontal Proud Surface Mount)
[CMU]

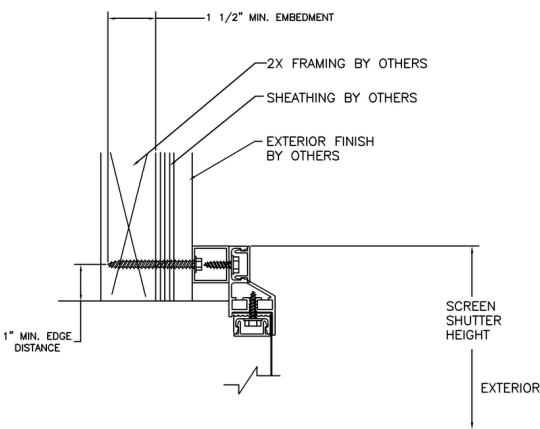


(Buildout, Vertical Proud Surface Mount)
[CMU]

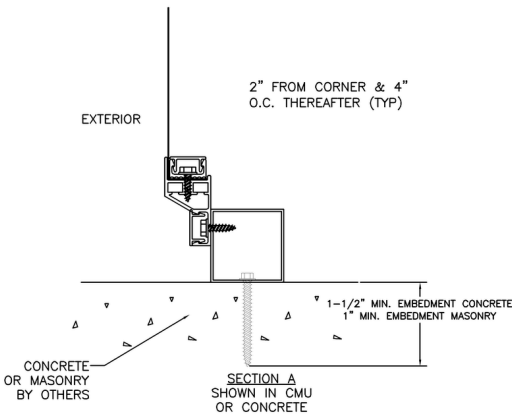
System Details (Fixed, Mounting Continued)



(Buildout, Vertical Proud Surface Mount)
[Wood]



(Buildout, Horizontal Proud Surface Mount)
[Wood]

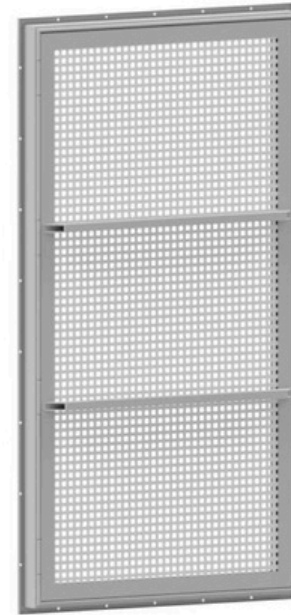
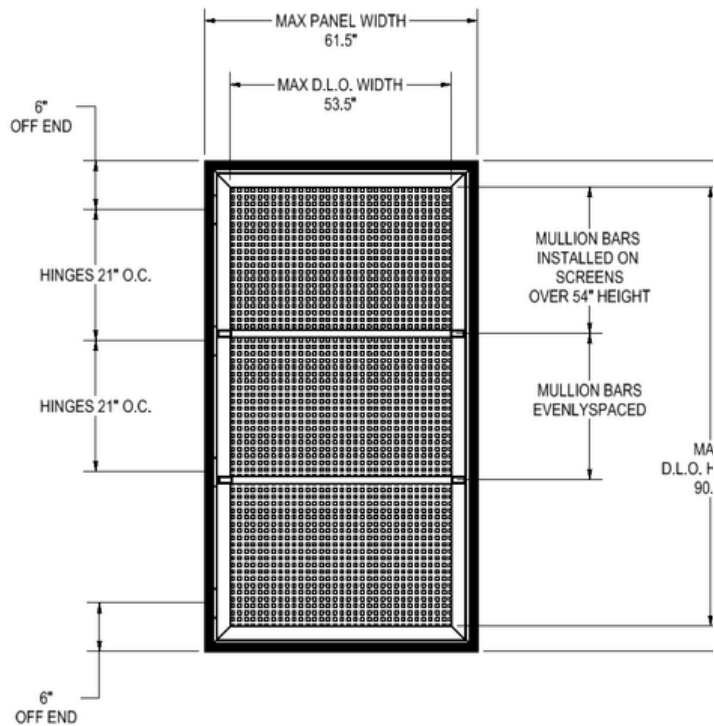


(Buildout, Generic Mount at Sill)
[CMU]

Note: 4 in. minimum glass separation required for hurricane mounting

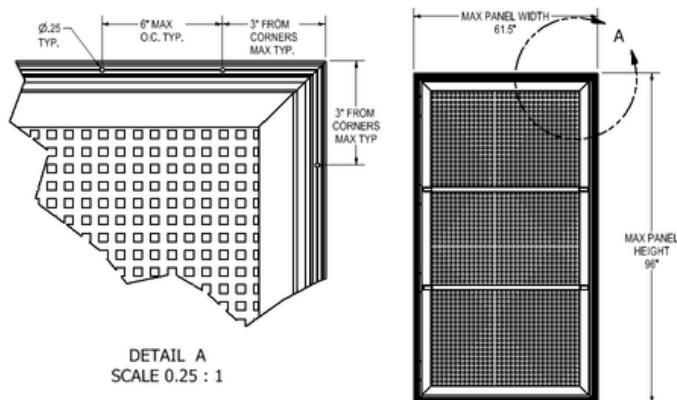
System Details (Operable Egress, Panel View)

External Elevation



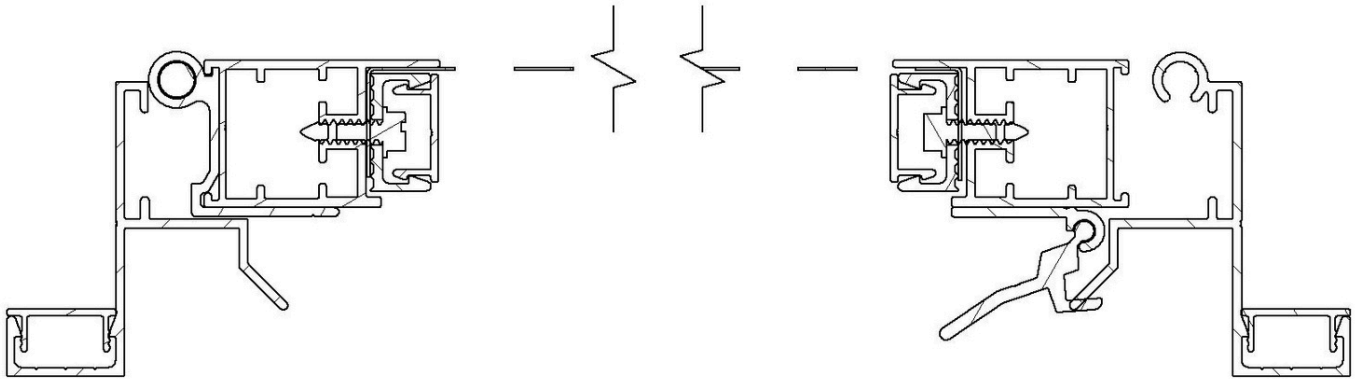
(3D View, External Elevation)

Screen Frame and Anchoring

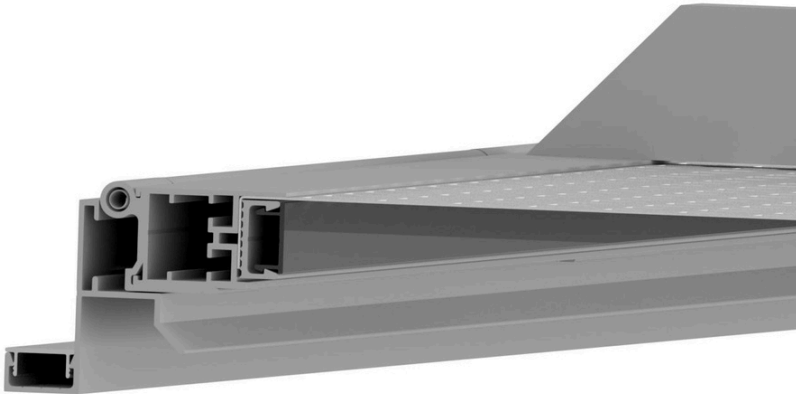


- System designed to attach to concrete, masonry, and wood framing
- Mullions used when screens are 54 in. (H) or taller, interval of 3 evenly spaced sections (2 mullions, 3 screen sections)
- Fastener spacing and type requirements for hurricane applications per approval documents
- Snap cover used to cover fasteners and provide clean surface aesthetic that blends with architecture

System Details (Operable Egress, Assembly View)



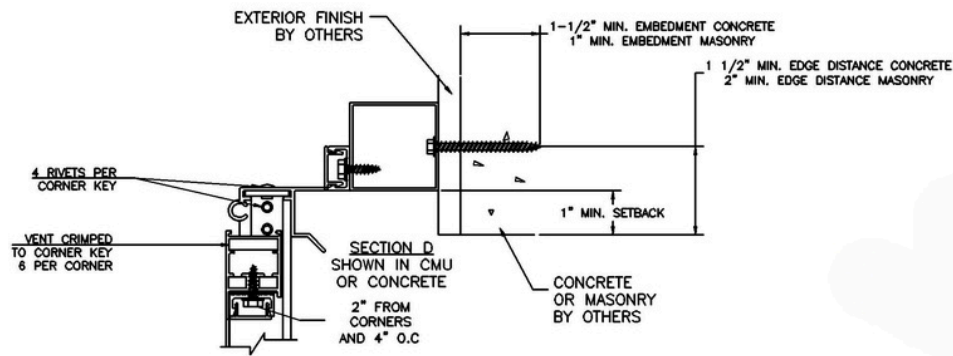
(Assembly (2D))



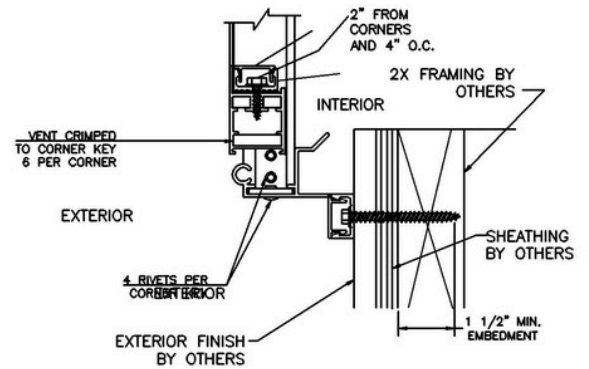
(Assembly (3D))

- Holes pre-drilled to speed in-field work
- Assembled components (ex-cover) provided as a system for installation
- Snap cover completes the install (post fastening / attachment)

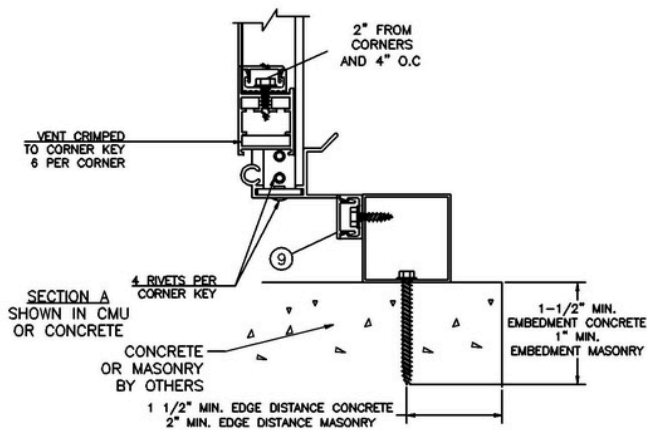
Option Details (Operable Egress, Mounting)



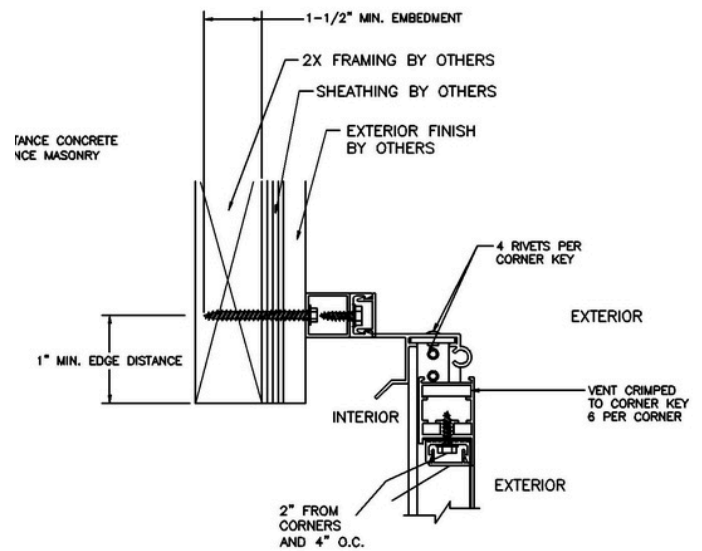
(Buildout, Horizontal Proud Surface Mount)
[CMU]



(Direct, Horizontal Proud Surface Mount)
[Wood]

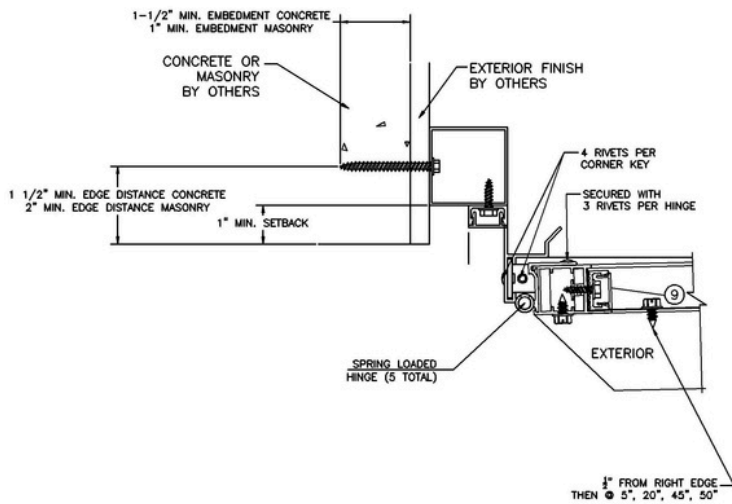


(Buildout, Generic Mount at Sill)
[CMU]

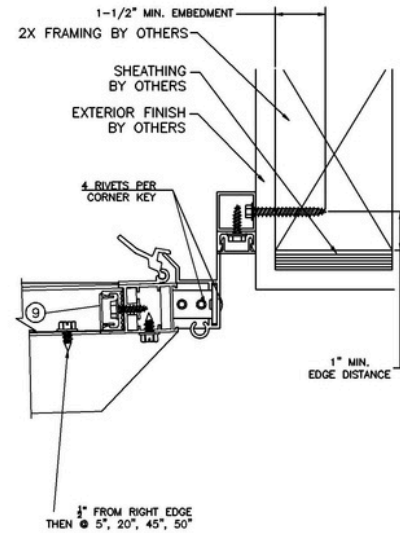


(Buildout, Horizontal Proud Surface Mount)
[Wood]

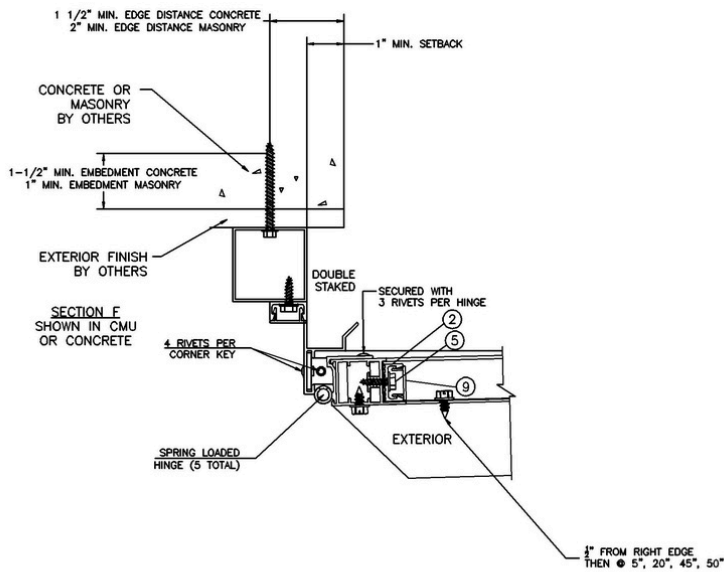
Option Details (Operable Egress, Mounting)



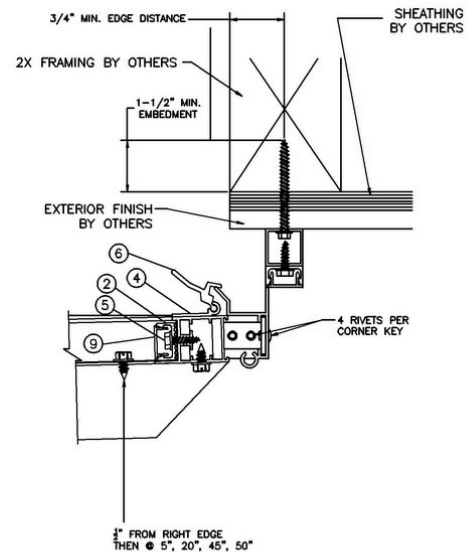
(Buildout, Vertical Trap Mount)
[CMU]



(Buildout, Vertical Trap Mount)
[Wood]

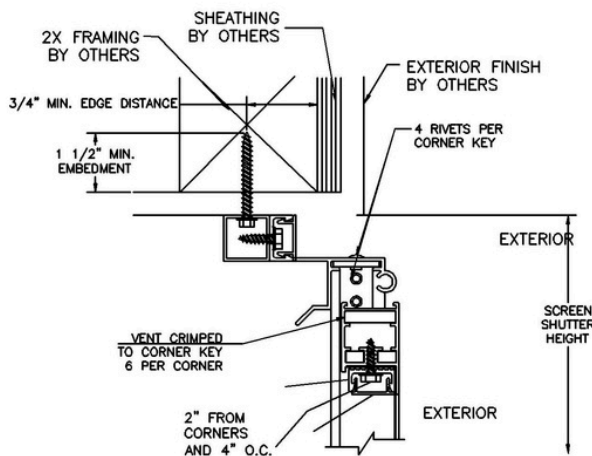


(Buildout, Vertical Proud Surface Mount)
[CMU]

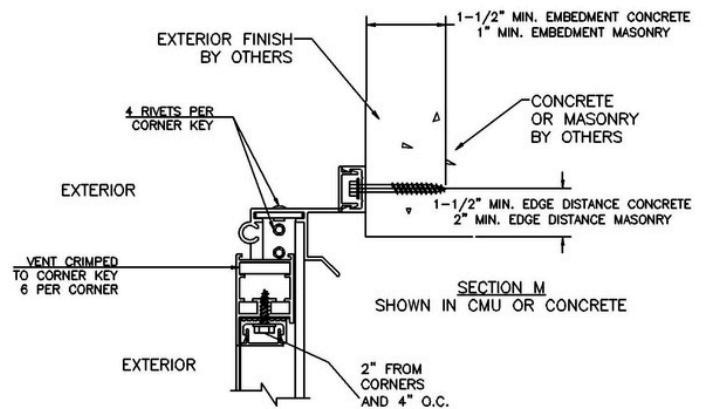


(Buildout, Vertical Proud Surface Mount)
[Wood]

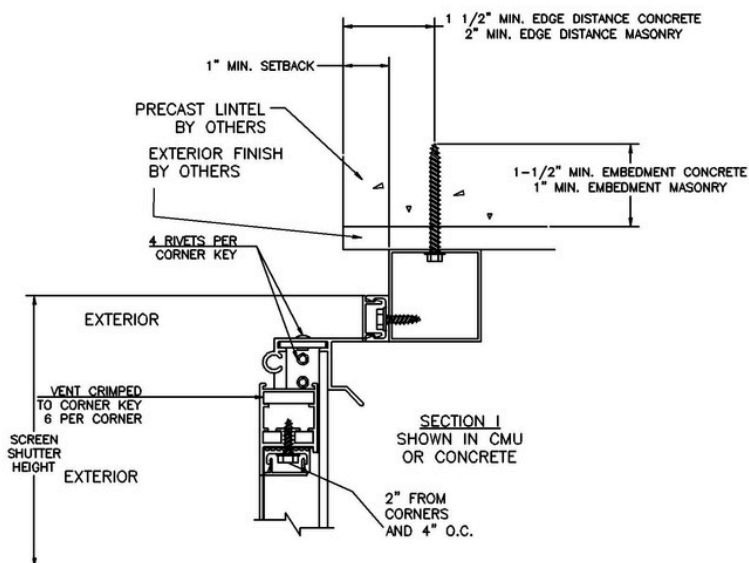
Option Details (Operable Egress, Mounting)



(Buildout, Vertical Proud Surface Mount)
[Wood]



(Direct, Horizontal Proud Surface Mount)
[CMU]



(Buildout, Horizontal Trap Mount)
[CMU]

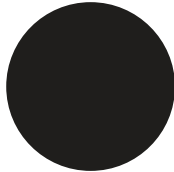
Note: 4 in. minimum glass separation required for hurricane mounting

Option Details (Colors)

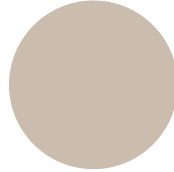
Colors and Finish



White



Bronze



Beige



Custom

- Powder coat options for standard colors.
- Powder wet and wet paint options for custom color.
- Contact your QMi Sales or Project Support Representative for pricing and lead times on custom colors.