



Transparent Shutters for Maximum Visibility

CRYSTAL CLEAR STRENGTH

TR4's thick, continuous full width poly carbonate panels provide clear views and powerful protection.

ELEGANT AND RESILIENT

Durably constructed and UV resistant, Transparoll® shutters are 250x stronger than glass of the same thickness and ensure long-lasting clarity.

SPACE SAVING DESIGN

Compact roll-up design optimized for applications with constrained head room or above-ceiling space.

VERSATILE AND EFFICIENT

Expansive coverage capabilities and range of integrated installation options make TR4 Transparoll® the perfect fit.

Features Summary

DIMENSIONS

- 48 in. - 222 in. (Width) (4 ft. - 18 ft. 6 in.) (clear opening)
- 48 in. - 144 in. (Height) (4 ft - 12 ft.) (clear opening)

CONTINUOUS POLYCARBONATE SLATS

- Heavy duty polycarbonate, 1/4 in. thick wall, secured between continuous horizontal couplers
- Slat material manufactured without seams for continuous width of the shutter
- Slat heights vary within curtain to ensure efficient stacking during roll

SLAT COUPLERS

- Extruded aluminum, 6063 T-6 alloy slat couplers.
- Continuous double interlocking hinges at top and bottom to engage clear polycarbonate panels

GUIDE RAILS

- Heavy-duty continuous extruded 6063-T6 rail with insulating woven polypropylene wear strips to prevent metal-to-metal contact during operation
- 3 in. (W) x 2-1/4 in. (D) reference

BOTTOM BAR (BASE SLAT)

- Standard with flush bottom cover (BS-3)
- Standard with wide ceiling flange (5.1/4 in.)
- Slim with gasket installed in last coupling

END CAP BRACKET PLATES

- Support curtain and drive barrel assembly
- Constructed of plate steel, bolted to structure with QMi-provided hardware
- Roller bearing on motor-side to ensure consistent operation

COUNTER BALANCE DRIVE BARREL

- Drive barrel is round steel tubing 6 in. outside diameter

SUPPORT TUBES

- Aluminum or steel support tubes 3x3 in. or 4x4 in.
- Floor angle clips, internal saddles, or base plates (where required)

Options Summary

HOOD / FASCIA

- Constructed of galvanized, electroplated sheet metal or aluminum (when used)

OPERATORS

- Jackshaft Motor with wall or key switch activation (standard belt, gear drive, or variable frequency drive (VFD))
- Egress and safety code-compliant Battery Backup
- Emergency Release Device (ERD) with emergency release handle

LOCKS AND OTHER

- Motor brake locking provides security for entire system
- Low profile and bottom-plate optimized base slats available to match architectural requirements

FINISH

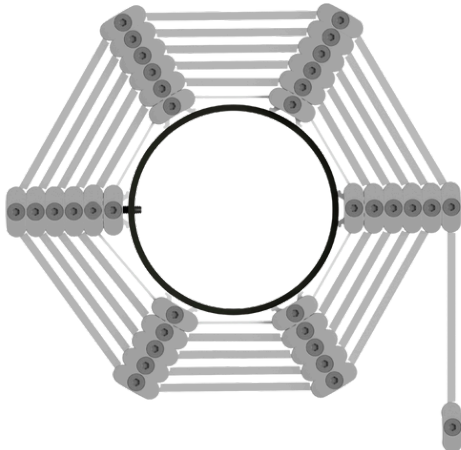
- Clear (Silver) Anodize and Black Anodize (Type II , Class 2, 10µm)
- Custom powder coat or wet paint available

WARRANTY

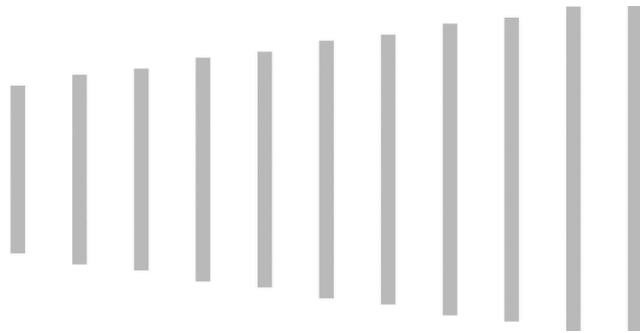


*Applies to commercial applications only and customers who follow Use and Care Guidelines

System Details (Slats And Wrap)



Couplers engineered to stack precisely
(as shown)



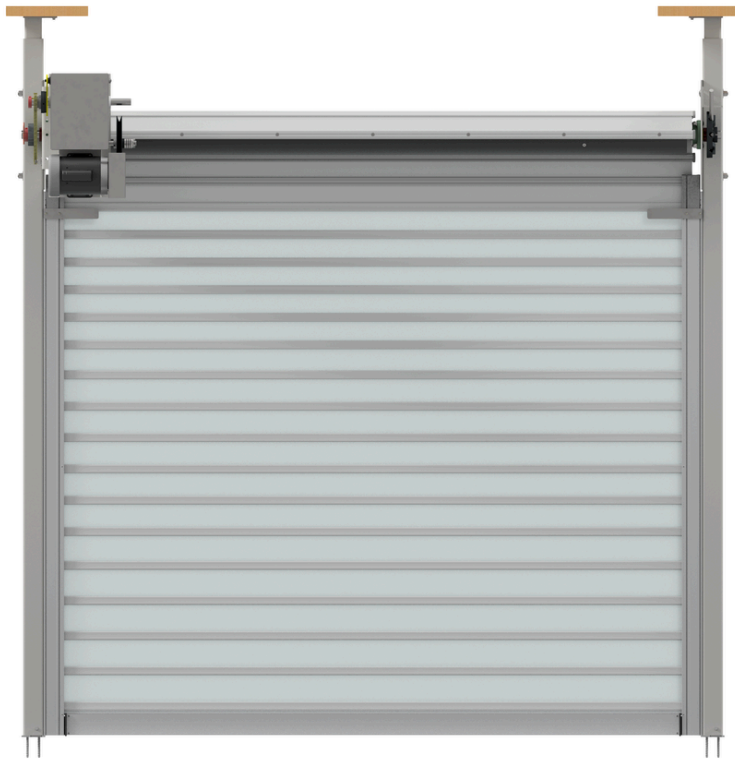
Slats of different sizes used to
ensure curtain wrap performance

Engineered Geometry with a range of slat sizes

- Optimized wrap design to minimize size and ensure slat integrity.
- Couplers refined at interfaces for strength and durability.
- Slat sequence and number used on a given shutter will vary based on configuration.

System Details (Curtain and rail Configurations)

TR4 Transparoll® Elevation (Motorized)



- Sequential slat configuration throughout curtain
- Couplers ensure strength and rigidity across span
- No vertical breaks in the curtain - one continuous flow for clear sight lines

Shutter Rail (Motorized)

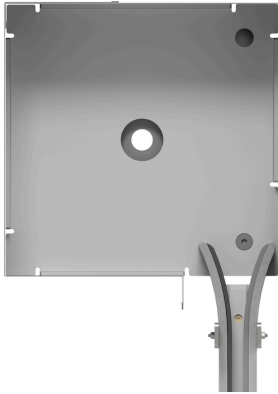


(3 in. (W) x 2-1/4 in. (D), Ref)

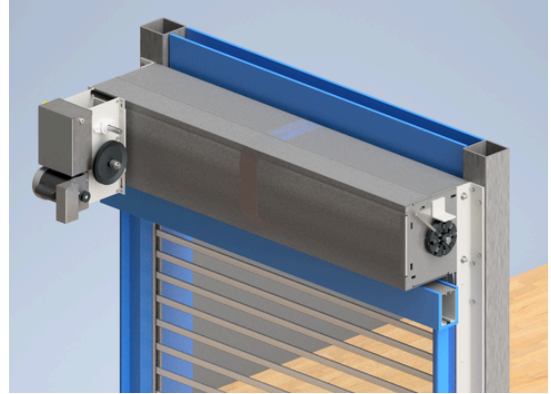
- Rail design maximizes strength and operational performance
- Rail can be exposed or integrated into wall structure (typ) for refined aesthetics
- Engineered wear-strips to minimize noise and provide smooth surface over time

Option Details (Housing and Base Slats / Locks)

Custom Housing



90° angle
(steel)

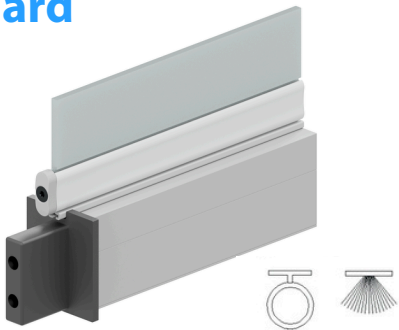


(Housing provides additional coil security and code-compliance [where required])

Optional housing provided for open-air installation or above ceiling with code requirements. Custom housings can be formed in 45° or 90° shapes.

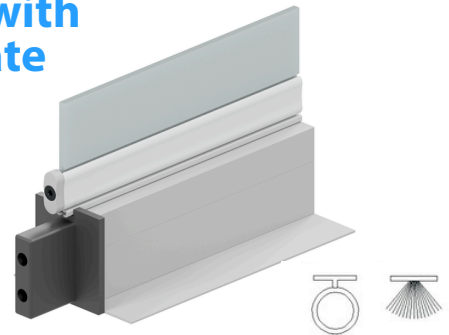
Base Slats and Locks

Standard



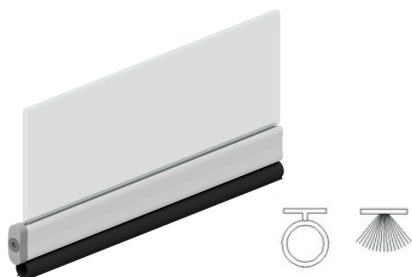
(Standard BS-3)

Standard with Ceiling Plate (Wide)



(Wide Base Slat Flange to Close Ceiling Gaps)

Slim



(Slim Coupling with Bulb Seal or Finseal as needed)

- Multiple base slat options for your application.
- Maximize visibility, ensure seamless ceiling aesthetics, or increase floor-level durability with these configurations.

Option Details (Operators and Colors)

Operators and Battery Backup



(Standard Belt Drive Jackshaft)



(Gear Drive Jackshaft)



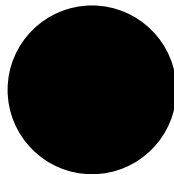
(Battery Backup Unit)

Motorized operators and battery backup to meet all application needs

Colors and Finish



Clear Anodized
(Silver)



Black Anodized



Custom

Available in two standard anodized finishes.
Powder coat and wet paint options for both standard and custom colors are available.

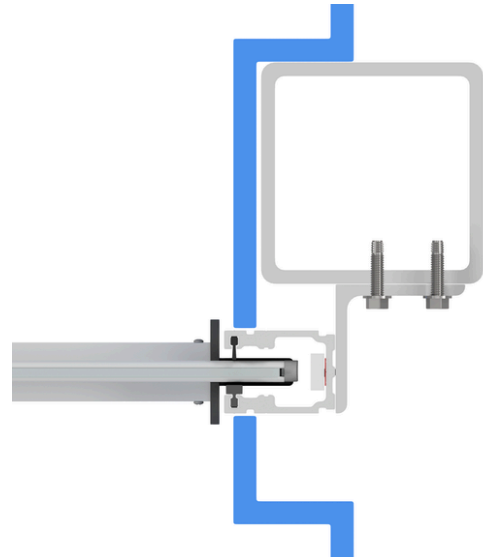
Contact your QMi Sales or Project Support Representative for pricing and lead times on custom color options.

Mounting Details



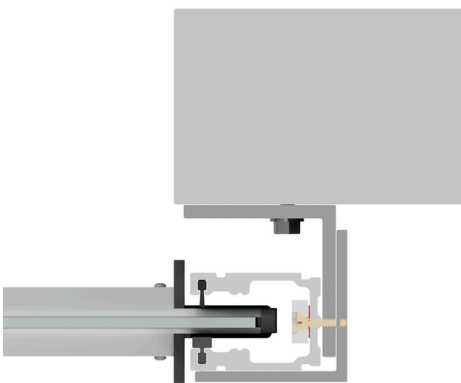
System designed for above ceiling installation mounting to a range of substrates

Surface Mount



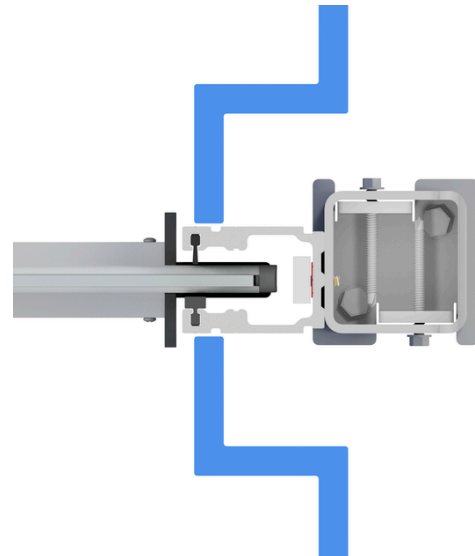
Surface mount to existing structure, concealed behind finishes

Surface Mount (ALT)



Surface mount with exposed rail system and housing

Jamb Mount



Standard jamb mount condition, concealed behind finishes