

AL2 Residential / PRIVACY SHUTTERS

Enhance Your Personal Privacy



Reducing Energy, Increasing Privacy and Security

PROTECTING YOUR HOME FROM INTRUDERS AND RISING COSTS

AL2 shutters offer a multi-faceted solution for your home. Beyond their aesthetic appeal, these shutters provide exceptional heat control. By effectively blocking sunlight, their insulated slat design significantly reduces heat gain during summer months, lowering your energy consumption.

Simultaneously, AL2 shutters offer enhanced privacy. Their perforated hinges allow you to provide light while maintaining privacy, ensuring your home remains a personal sanctuary.

AL2 shutters also help secure your home, deterring intruders and providing an added layer of protection for your family and belongings.

With cost effective AL2 Privacy Shutters from QMi, both your home and your pocketbook are safe.



AL2 Privacy Shutters adding a layer of energy-efficient privacy and security to a home.

Every 26 seconds, a home burglary occurs in the U.S., approximately 3,060 per day.

—Forbes Home, 2024

Average cost of home burglary is \$2,700, and increases insurance rates by 20%.

—FBI, Google Consumer Surveys
[The Zebra], 2024

Residential energy costs have risen 20% since 2019.

—Statista, 2024

Nearly 8 in 10 adults are concerned with rising energy costs.

—CNET Survey, 2024



Home burglaries continue to be a large problem in many urban and suburban cities.

QMi AL2 Shutters

Provide Luxurious Privacy and Insulated Comfort

SAVE ENERGY AND ENJOY PRIVACY



Energy and Privacy



Home Security



Weather Protection

FEATURES

- European-style shutter with slats made of foam-filled aluminum for upgraded insulation.
- Light slits for a gentle illumination while preserving privacy.
- Designed to reduce heat load for a relaxed environment.
- Offers excellent shading from the intense sun.
- Noise-free, peaceful operation.

OPTIONS

- Versatile housing styles to match your home decor.
- Manual and motorized operators for any opening type.
- Several standard and custom colors to choose from.

Flexible roll-up with discreet, narrow side tracks make for a sleek shutter that adds aesthetic appeal

Vented, light slits between slats allow in light and air when shutter is left in the partially open position

Foam-filled aluminum slats provide a thermal and noise barrier with enhanced insulation

LUXURIOUS PRIVACY, INSULATED COMFORT



AL2 shutters provide privacy and a security barrier for a New Mexico home.



INSULATED. SAFE. ELEGANT.

Elevate your home's privacy and energy efficiency with AL2 Privacy Shutters. AL2 shutters enhance comfort, privacy, and security in your personal space.

With a maximum size of 90 sq ft — the most compact in our range — these European-styled shutters are impeccably crafted with roll-formed aluminum profiles and insulated with a structural foam filler. They provide superior insulation against cold, heat, sun, and noise while offering a light security barrier for your home.

CORE APPLICATIONS

Superior materials and quality construction ensure AL2 shutters provide the privacy you seek and the performance you deserve.

Windows and Doors AL2 shutters provide coverage for your building envelope, adding an insulating, protective layer to your home's openings.

Patio / Exterior Enclosures AL2 can be leveraged on small- to medium-opening outdoor spaces, complimenting your dynamic lifestyle.

AL2 shutters deliver noise reduction, energy efficiency, and security to increase your home's comfort and your peace of mind.

Enhanced Privacy

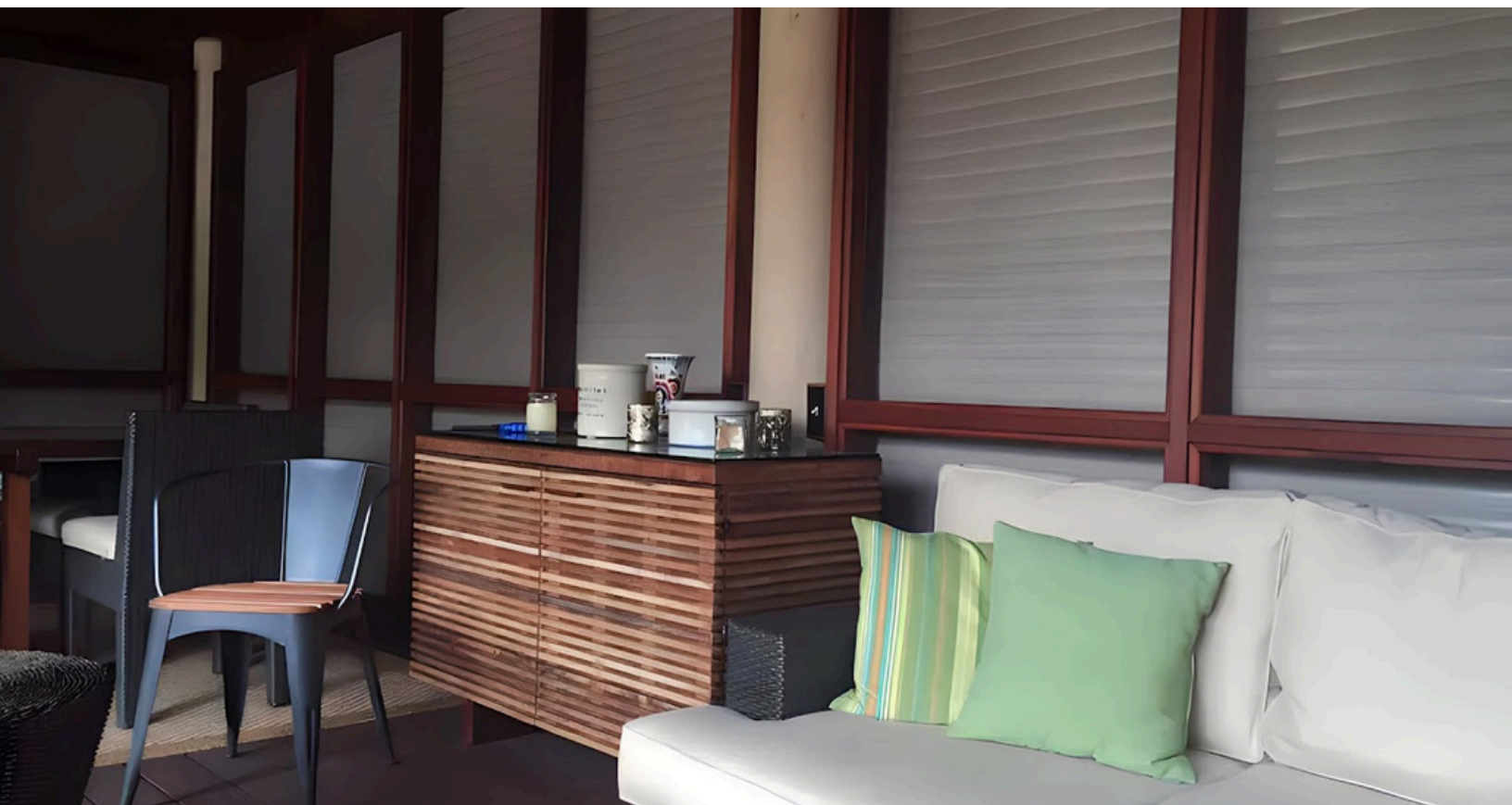


Ivory AL2 provides a secure noise barrier in a bustling urban environment.

CAREFULLY CRAFTED, CONVENIENT COMFORT

European-inspired, sleek AL2 shutters are expertly crafted from roll-formed aluminum and foam-filled. They offer a barrier against noise, weather, and intrusions while ensuring privacy and shade from the sun.

- 42mm (1.65 in.) slat height designed perfectly energy-efficient protection with a modern edge.
- Lowers thermal impact for a more relaxed sanctuary, saving heating energy and improving passive cooling.
- Offers privacy with an indulgent, stylish touch.
- Provides secure airflow for a breezy, worry-free experience.
- Tames the bustle of the world for quiet comfort.



AL2 Privacy shutters provide the perfect fit for a back porch sanctuary.

Illuminating Atmosphere

SOPHISTICATED SOLITUDE, SERENE STYLE

Elevate your ambiance and aesthetics with AL2, where elegance meets practicality for luxurious living.

- Impeccably crafted with roll-formed aluminum profiles, AL2 adds a touch of sophistication to your space.
- Discreet light slits balance privacy with a soft glow of natural light.
- Featuring a sleek, design with a maximum size of 90 sq ft, AL2 shutters are perfect for any window.



Light slits provide gentle illumination for a comfortable ambiance.



AL2 is also a versatile choice for commercial spaces requiring light security, including bars and countertop applications.

Housing Style and Finish Options

HOUSING SHAPES

Whether you prefer modern 90° angles, enjoy a classic 45° angle, or like the curves of a round design, we have box housing choices tailored to fit your style and match your home's aesthetic.

Box Housing

Constructed of aluminum alloy and available in 6, 6.5, 7, and 8 in. sizes.



90°



45°



Round



A 90° box housing shown here on brown AL2 shutters being effortlessly operated using a manual strap box.

SLAT PROFILE

The AL2's curtain is made up of sleek 1.65 in. slats, infused with a medium-density structural foam filler. This design provides enduring style with superior insulation.

Tailored for smaller spaces, the AL2 combines a sleek, sophisticated approach with practicality. While offering basic protection, its primary charm lies in enhancing the aesthetics of compact areas with its refined styling.

AL2 shutters are not hurricane rated.

COLORS

Powder coat and wet paint options for both standard and custom colors are available.

Contact your QMi Sales or Project Support Representative for pricing and lead times on custom color options.



Clear Anodized (Silver)



Beige



Bronze



Brown



White



Gray



Ivory



Custom

Lock and Control Options

SECURE LOCKS

Adaptable locking solutions with easy maintenance features and automated or manual use. Designed for residential settings, our lock options ensure effortless installation and dependable security.

General Base Slat

- Gear, or strap operators using box housing mechanisms for locking feature.
- Slightly different configurations for each operator.

General Base Slat (motor)

- Motorized operator uses system brake to provide locking for entire curtain.

Slide Lock

- Supplementary locking for higher security manual applications.
- Used for both floor and knee wall window installations.



General Base Slat
(Gear and Strap)



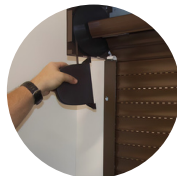
General Base Slat, Motor Brake
(Motorized)



Slide Lock Base Slat
(Manual)



Crank Pole
(Manual)



Strap Box
(Manual)



Wall Switch
(Motor)



Wireless Remote (HZ)
(Motor)



Battery (EZ)
(Motor)



TaHomaTM (HZ)
(Motor)

EFFORTLESS CONTROLS

Classic manual operation or various advanced motorized solutions are available for seamless comfort and privacy, with motors and software / controls from Somfy® and OZ Roll®.

Crank Pole

Effortless and reliable manual shutter control with a cost-effective hand-operated mechanism.

Strap Box

A simple and economical manual control using a pull-strap for efficient shutter movement.

Wired Motor

Ensures consistent operation with a convenient wall switch. (Standard and Override). Line voltage.

Wireless Remote Motor (HZ)

Offers easy control at your fingertips. (Standard and Override). Line voltage.

Battery Motor (EZ)

Provides flexible, low-voltage battery operation to minimize wiring and maximize positioning choices.

Smart Home TaHomaTM (HZ)

Wireless connectivity with mobile device control from anywhere, links into home automation systems.

Case Study: Privacy and Style for a Suburban Illinois Home

OVERVIEW

A homeowner in a suburban Illinois neighborhood was seeking a way to improve their home's privacy, reduce noise, and enhance energy efficiency. With a variety of different openings to cover, the homeowner needed a versatile solution that would complement the home's aesthetics and provide practical benefits.

AL2 privacy shutters were selected in a clean, white finish to match their home's aesthetics. The shutters were installed on multiple windows and doors throughout the house, including the bay windows, bathroom windows, and the front door.

The white AL2 shutters perfectly complemented the home's style, creating a clean and classic look. The homeowner was delighted with the way the shutters enhanced the overall aesthetic of their home.

AL2 shutters not only addressed their specific needs but also exceeded their expectations in terms of privacy, noise reduction, energy efficiency, and aesthetic appeal.



Shutters were installed over bathroom windows for added personal privacy.

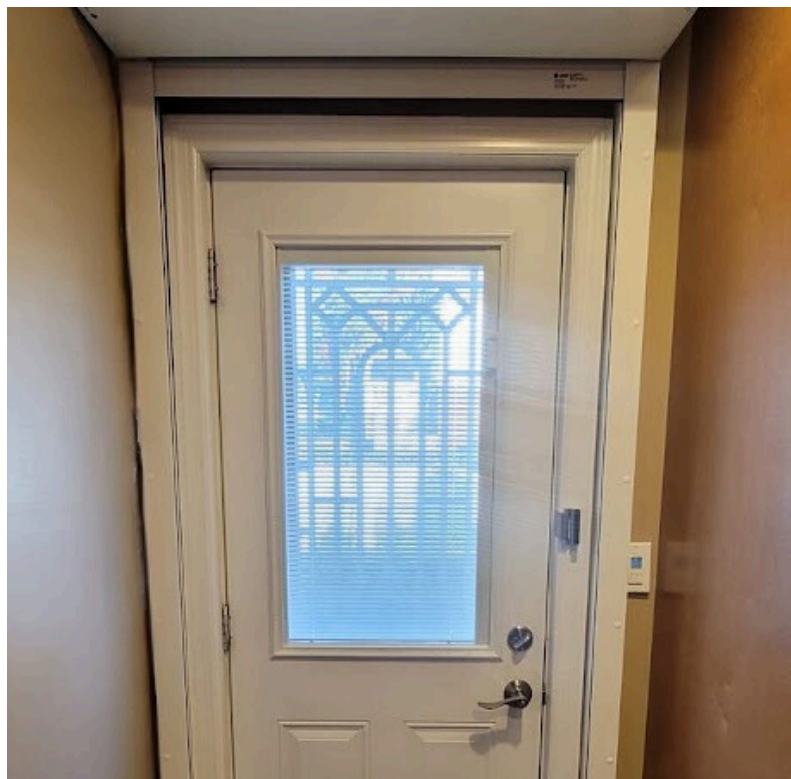


The white AL2 shutters provided elegant and efficient privacy with stylish appeal.



"I can't believe how beautiful but also incredibly functional these shutters are. They've made my home a much more comfortable place to live."

— HOMEOWNER



An interior mounted AL2 shutter installed over to the home's front door.

Why Choose Us



AN ENTIRE COMPANY BUILT AROUND SECURITY-DRIVEN INNOVATION

We provide innovative products and unrelenting customer service, protecting what matters most.

THE PASSIONATE, SINGLE-MINDED MARKET LEADER



Superior Product



Fastest Lead Time



Ongoing Support



Customer-Focus

Personalized, attentive care from start to finish.



Innovation

Creative, unmatched solutions for the most demanding applications.



Integrity

Honest, responsible, and caring. We treat our customers and each other with respect.



Quality

Exceptional high-durability products and service. Unrelenting support.

RELATED INDUSTRY AFFILIATIONS



RELATED PRODUCTS



A Trusted Partner

With over 35 years of security product experience and more than 40,000 homes and retail locations protected by QMi, we have the skills to do the job right.

You can have confidence knowing that your family, assets, and property are well protected.

