

Commercial / PRODUCT SECURITY CASES

# Secure Your Valuable Inventory



# Securing Valuable Merchandise throughout the Store

## PROTECTING PRODUCTS WITH A LAYERED SECURITY APPROACH

Organized retail crime (ORC) has become a significant challenge for retailers worldwide. Sophisticated criminal networks are increasingly targeting high-value merchandise, exploiting vulnerabilities in security measures. To combat this rising threat, retailers must implement robust security strategies that incorporate multiple layers of protection.

One critical component of effective retail security is the use of high-quality security cases. QMi Product Security Cases offer a versatile solution for protecting valuable items both in inventory rooms and on the retail floor. These cases are designed to deter theft and simplify daily inventory management.

Available in both free-standing and modular integrated casework options, QMi security cases can be tailored to meet the specific needs of any retail environment.

Whether you're securing small electronics, jewelry, or other high-value items, these cases provide a reliable and efficient way to protect your inventory, reduce shoplifting, and lower product losses due to theft.



QMi modular casework protecting guns on retailer floor. Secure in place, avoiding inefficient stock rotation.

**The National Retail Federation (NRF) reported that 60% of retailers experienced a rise in organized retail crime.**

—National Retail Federation, (NRF), 2024

**In 2023, U.S. businesses faced an 8% increase in burglary and break-in incidents.**

—FBI Crime Statistics, 2023



The shattered remains of a storefront post smash-and-grab spree, highlighting the vulnerability of unprotected businesses.



Counter-jumpers on the rise, increasing risk for merchandise stored behind minimal barriers.



# Security Cases Provide Unparalleled Security and Efficiency

## SECURE STORAGE FOR YOUR VALUABLES



Merchandise Floor



Inventory Room



Dispensaries



Electronics



Pharmacies



Warehouse

## FEATURES

- 18-gauge steel cabinet with industry's strongest shutter.
- Effectively reduces theft.
- Optimized for merchandise floor and inventory/backrooms.
- Simple push-up/pull-down operation.
- Flexible shelf layout and/or peg-hooks.
- Available as Free Standing Cases or Modular/Custom Casework.

## OPTIONS

- Wide range of size, shelf, and basket combinations for your needs.
- Mid-curtain lock for easy access throughout the day.
- Solid or perforated slats.
- Motorized capability in modular solutions.
- Power and lighting available for additional functionality.



Full-Height Security Case

18-gauge steel cabinet provides robust protection for your products and merchandise

Mid-curtain finger pull for effortless push up and pull down operation



Basket storage and slideouts available

Short, Wide Security Case



High-security curtain with continuously engaged end retention

Tall, Skinny Security Case



# INTEGRATED AESTHETICS, ROBUSTLY ENCASED



Integrated, custom casework secures high-value merchandise.

## VERSATILE. STRONG. TAILORED.

Our freestanding security cases blend steel toughness with a sleek roll-down shutter to shield valuable inventory effectively. With customizable features to cater to varied retail needs, they maintain aesthetic appeal, while ensuring your merchandise is protected.

Our modular security casework can be built-in for stockrooms or merchandise selling areas, matching floor set aesthetics and leveraging existing structures. These solutions blend seamlessly into your building while enabling your inventory security plan.

## CORE APPLICATIONS

Case solutions to meet your merchandise or inventory security needs in free-standing and modular / integrated options.

- Merchandise Floor** Reduce unnecessary stock movement and protect valuable merchandise on your showroom floor.
- Inventory Rooms** Protect items from shrink or burglary in your backroom with flexible free-standing or modular / integrated options.

Electronic stores, dispensaries, hardware stores, and other commercial customers protect their business interiors with QMi Security Cases.



# Robust and Refined Security

## SLEEK, SECURE AND SEAMLESSLY TAILORED

Ensure your prized merchandise is shielded with our custom security cases. Crafted from sturdy steel, they blend robust protection with elegance and ease.

- Protect valuable merchandise throughout the store.
- Provide an easy-access, secure solution for employee stock rotation.
- Protect against shoplifting during staffed hours and smash-and-grabs when closed.
- Reduce unnecessary movement of products when opening-closing operations.



A security case being effortlessly closed using the finger pull provided.



Modular casework covers large spans, either motorized (shown here) or manual.



# Adaptable Interiors



A solid shutter curtain in front of double doors adds layers of protection for your safely stored valuables.

## SPACIOUS AND FLEXIBLE

Customizable to fit your space, QMi security cases are available in a variety of sizes and door and shelving configurations.

- 2- and 4-Door options with range of shelving configurations.
- Standard sizes for rapid delivery, with custom options available.
  - 42 in. (W) x 84 in. (H) x 20 in. (D)
  - 35.5 in. (W) x 47.5 in. (H) x 66 in. (H) x 15 in. (D)
- Integrate into existing shelving or surrounding structure to provide security in almost any location.

Built-in storage adding security to your inventory room.



*\*Custom sizes may have extended lead times or minimum quantity requirements.*



# Slats, Locks and Motor Options

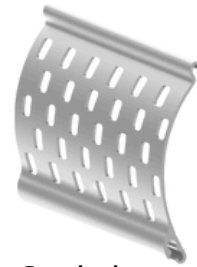
## SLATS

Solid and perforated slat design for robust security and targeted visibility.

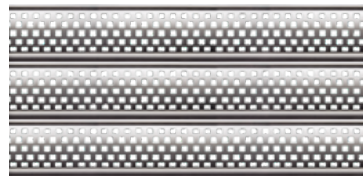
Our punched case slats offer security, visibility, and airflow for applications requiring it.



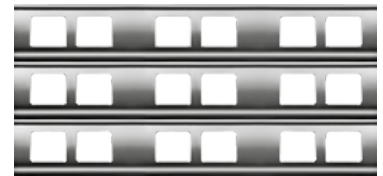
Solid



Punched



P51



P21

## LOCKS

Several locking options to choose from for Free Standing and Modular Cases.

- Base Slat Cylinder lock, alone or paired with a mid-curtain for supplemental security.
- Mid-curtain for easy access throughout the day or full-time security for lower value items.



Base Slat Cylinder Lock



Midcurtain Lock

## MOTORS

Available on Modular or Custom Casework, motors simplify ergonomics and speed daily locking.



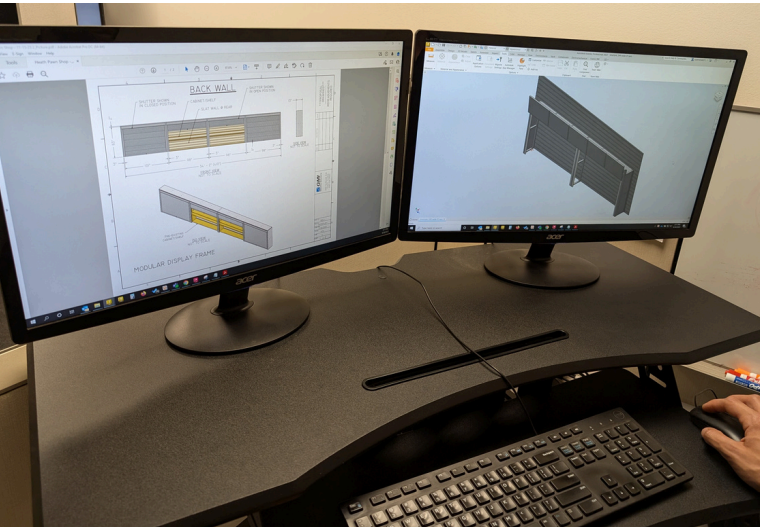
Wall or  
Key Switch



Remote (HZ)



# Modular / Custom Casework and Colors



QMi Applications Engineering refining modular gun case job for a customer.

## MODULAR / CUSTOM CASE SOLUTIONS

QMi tailors its case solutions to wider openings, security existing or new casework in front or back of store.

- Modular assemblies, engineered for simple fit and rapid installation.
- Structural mounting tailored by job to match aesthetic and security needs of the unique in-store space.

## COLORS AND FINISH



Clear Anodized  
(Silver)



Beige



Bronze



Brown



Gray



Ivory



White



Custom

Powder coat and wet paint options available for both standard and custom colors available (curtain). Standard Free Standing Case color is gray, custom colors available.

Contact your QMi Sales or Project Support Representative for pricing and lead times on custom color options.



# Case Study: Hardware Store

## OVERVIEW

A local hardware store, already satisfied with QMi AL8 shutters for storefront security, recognized the increasing customer demand for online order pickups. The owner identified a need for stronger security on the merchandise floor to safeguard these special orders.

The store's current security measures were inadequate for the increasing theft risks, particularly for online pickup items stored in accessible locations. This vulnerability threatened both the merchandise and the store's reputation for dependability and customer service.

Installing QMi's security case was pivotal for the store's protection. The owner noted its dual benefit: it not only safeguarded merchandise but also reassured customers and staff. Its sturdy design and reliability effectively thwarted theft, ensuring secure storage for online orders until pickup.

Adapting to evolving security needs in a retail environment is crucial, and this highlights how QMi's innovative solutions can transform a store's safety and customer trust.



A clear anodized, solid slat, standard security case protects merchandise ordered online while awaiting customer pickup.

*"The Security Case was a great addition. We use it to house all our special orders and online orders, to keep them safe, so they're not just sitting out in the open, or in an open or unlocked case."*

— Hardware Store Owner



The store owner prepares to manually close his merchandise security case.



# Why Choose Us



## AN ENTIRE COMPANY BUILT AROUND SECURITY-DRIVEN INNOVATION

We provide innovative products and unrelenting customer service, protecting what matters most.

## THE PASSIONATE, SINGLE-MINDED MARKET LEADER



### Superior Product



### Fastest Lead Time



### Ongoing Support



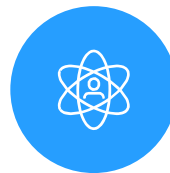
### Customer-Focus

Personalized, attentive care from start to finish.



### Innovation

Creative, unmatched solutions for the most demanding applications.



### Integrity

Honest, responsible, and caring. We treat our customers and each other with respect.



### Quality

Exceptional high-durability products and service. Unrelenting support.

## RELATED INDUSTRY AFFILIATIONS



## RELATED PRODUCTS



Front



Middle



Back

# A Trusted Partner

With over 35 years of security product experience and more than 40,000 retail locations protected by QMi, we have the skills to do the job right.

You can have confidence knowing that your investment is well protected.

