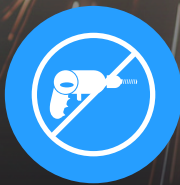


**HD1 Commercial / HIGH-SECURITY DOOR**

# Unmatched Door Security



**ANTI-CUT**



**ANTI-DRILL**



**ANTI-PRY**



**ANTI-IMPACT**

# Safeguarding Doors From Organized Attack

## KEEPING YOUR BUSINESS SAFE FROM MODERN THREATS

Organized retail crime (ORC) has become a significant challenge for retailers, restaurants/bars, and other small businesses, and increasingly sophisticated methods are used to target them. One alarming trend is the rise in door attacks, where criminals use specialized tools and techniques to force entry. As police response times often lag due to increased workloads and resource constraints, the need for robust door security measures has become paramount.

The QMi HD1 High-Security Door offers a proactive solution to this growing threat. Engineered with advanced technology and innovative design to thwart determined criminals, these doors are designed to withstand even the most aggressive forced entry tool attacks. HD1's patent-pending anti-cut technology and hardened plates create a solid barrier against power tools. Door reinforcements, hinges, and other hardware stop pry and forced entry attacks from organized criminals.

Reduced door break-ins minimize the disruption to operations and reduce the associated costs of repairs, lost merchandise, and potential legal liabilities. By investing in this advanced security technology, businesses can reduce their losses and create a safer business for their customers and their employees.



HD1 High-Security doors provide unrelenting perimeter defense against aggressive criminal attacks.

**Last year, 81% of respondents reported that ORC [Organized Retail Crime] offenders had grown more violent.**

—National Retail Federation, (NRF), 2023

**From a decade ago, Priority 2 property crime response time is now 12 minutes, and Priority 3,4,5 has gone from 30 minutes to over 1 hour.**

—Houston Chronicle, 2023



Thieves breaking into the back door of local small businesses in Chicago.



Many exit doors are in secluded back-of-building areas making them perfect targets for criminals.



# An Industry-First, Retrofitting High-Security Door Provides Nearly Impenetrable Protection

## PREVENT COMMERCIAL DOOR BREAK-INS



Pawn



Liquor



Dispensaries



Gas Stations



Pharmacies



Municipal and Government

Continuous hinge through bolted for extra strength and easy installation

Interlocking astragal prevents pry attacks

Exterior view (installed on existing frame)

## FEATURES

- First-of-its-kind turnkey, retrofit solution.
- Patent-pending anti-cut technology.
- Integrated anti-drill plates, anti-pry interlocking astragal, and continuous hinge.
- Resists heavy impact attacks such as sledgehammers.
- Integrated 5-Point locking system.
- Rapid installation into existing door framing.

## OPTIONS

- Battery-operated alarm and delayed egress with alarm configurations.
- External key card access and external keyed lock with a breakaway handle available.
- Single or double door options, with or without center mullion.
- Custom sizes and colors to meet opening requirements.
- Supplementary framing available. (where required)

Patent-pending anti-cut technology grabs and stops the saw blade, resetting itself between attacks

Anti-drill plates eliminate reach in tool use

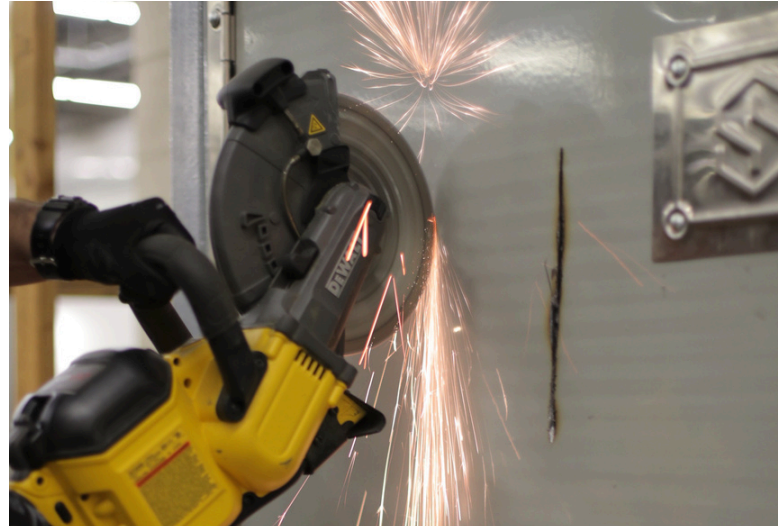
Interior view (installed on existing frame)

# Anti-Cut Technology

## CUTTING-EDGE, CRUCIAL, AND COMMITTED

Equipped with groundbreaking anti-cut technology, this door redefines business security, offering unparalleled protection against cutting attacks.

- Patent-pending anti-cut technology halts electric and gas-powered saws, forming a robust shield against power tool attacks.
- Active protection and self-resetting to offer unwavering defense against repeated saw attacks in the same location.
- Instantly disables saw blades upon contact, providing a steadfast barrier against aggressive intrusions.



Meticulously engineered to counter advanced cutting tools, HD1 ensures superior security at critical exit points.



Single door HD1 configuration protecting emergency exit for electronics retailer.

# Anti-Drill Design



Built to deliver unmatched resilience, the HD1 door safeguards against advanced drilling techniques.

## DRILL-RESISTANT AND DURABLE

Enhanced with anti-drill features, this door is your steadfast guardian against drill attacks, offering a level of protection that's as reliable as it is robust.

- Incorporates bonded anti-drill plates, a formidable barrier against steel and cobalt drill bits.
- Engineered to resist both hole saw and drill attacks.
- Robust construction deters and withstands even the most persistent drilling attempts.



HD1 secures the emergency exit of high-value warehouse.



# Anti-Pry Astragal and Hinge

## PRY-PROOF, CONTINUOUS PROTECTION

Designed to defy and deter, this door stops pry attacks.

- Interlocking astragal and through-bolted continuous hinge protect door edges from pry tools.
- Stainless-steel hinge creates maximum flexibility for easy retrofit onto existing frame.



Continuous hinge and interlocking astragal protect against pry attacks.



Standard and custom-sized doors to fit job-site needs.

# Anti-Impact Integrity



QM1 HD1 Exit Door is the ultimate safeguard against sledge and impact threats, promising enduring security.

## IMPACT-IMMUNE AND IRON-CLAD

Crafted for toughness, our high-security door stands firm against the most forceful sledgehammer or maul impacts.

- Specifically designed to withstand heavy impact and sledgehammer attacks.
- Reinforced structure offers enhanced durability over time.
- Tested to exacting standards with a range of tools across door surface, ensuring peace of mind.



White double doors defending the side exit of a major retailer.

# Lock and Color Options

## LOCKS

Choose from a range of lock options, including our standard 5-point system for maximum security.

Locks tested and optimized specifically for the HD1, ensuring security and performance over time.

### Multipoint Locking Systems

- 5-Point Trident®: Maximum locking security with dual latch and hinge-side bolts.
- 3-Point Detex®: Rugged push-bar option with internal key for additional control. Photo-luminescent lettering increases visibility if lights go out.

### External Handle Treatment

- Stainless steel breakaway handle for use as entrance door, compliant with keycard options.
- Stainless steel safety plate no handle configuration for exit-only doors.



A Trident® Multipoint Lock shown here on a gray HD1 Door is a dependable choice with maximum holding force.



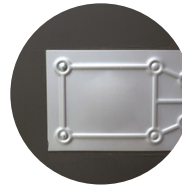
Trident®  
Multipoint Lock



Detex®  
Multipoint Lock



Keyed, Breakaway  
Handle



Safety Plate

## COLORS

Standard and custom paint colors are available for your HD1 door. Interior and exterior colors can be different providing retrofit flexibility that matches existing aesthetics.



Bronze



Gray



White



Custom

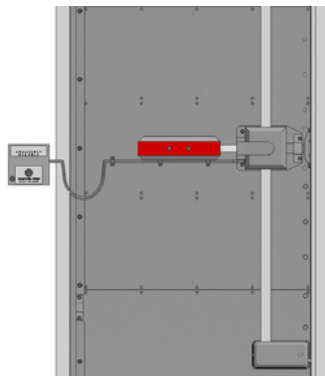
Contact your QMi Sales or Project Support Representative for pricing and lead times on custom color options.



# Other Options and Test Results

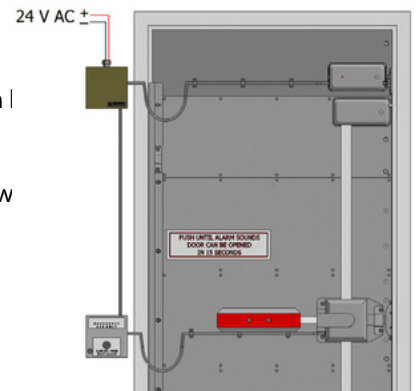
## BATTERY-OPERATED ALARM

- Wall-mounted alarm box w/95 dB alarm.
- Powered by 9V batteries, wire loop transfer



## DELAYED-EGRESS ALARM

- Wall-mounted alarm w/95 dB alarm.
- Line voltage power w/battery back-up.



## HANDING AND PADDING OPTIONS

- 24V DC electronic entry controlled by access control system. (by others)
- Standard 12 in. and CA-compliant 18 in. push paddles

# Standard Security Door vs. HD1

## Standard Metal Security Door

## QMi (HD1)



**Breach**  
90 seconds

**No Breach**  
18 minutes  
(Stopped Test)



**Breach**  
10 seconds

**No Breach**  
25 minutes  
(Stopped Test, 4 drill bits)



**Breach**  
20 seconds

**No Breach**  
15 minutes  
(Stopped Test)



**Breach**  
15 seconds

**No Breach**  
10 minutes  
(Stopped Test, 83 hits)

- We put our door to the test against a range of tools.
- HD1 slows intruders down 120x more than a standard security door.

SCAN TO WATCH  
THE VIDEO



# Case Study: Dollar Store

## OVERVIEW

A major Dollar Store chain in an urban neighborhood had been experiencing several backdoor attacks. The store, adjacent to a nearby alley, was hit by criminals many times over a few months.

Attempts to “beef up” the standard hollow metal back door by adding lock bars were unsuccessful, with attackers again breaching the “improved” door, stealing backroom merchandise, and causing some scared employees to refuse returning to work.

The QMi HD1 High-Security Exit Door was installed shortly after the most recent break-in. Its heavy-duty construction and advanced locking system make it nearly impenetrable to burglars. With its solid, muscular design, the door's intimidating presence has sent a clear message: “Not today, thieves.”

This visual deterrent and its proven security features have discouraged countless criminals from attempting another break-in at this location. Employees now have peace of mind from a safe and secure working environment.



An expert QMi installer secures the continuous hinge on the QMi replacement door.

*“We have not even had an attempted break in ever since we installed the QMi door, let alone a breach. It’s been a huge relief and the staff here feel safer coming into work.”*

— General Manager, Dollar Store



Standard hollow metal security door.

QMi High-Security Exit Door.



# Why Choose Us



## AN ENTIRE COMPANY BUILT AROUND SECURITY-DRIVEN INNOVATION

We provide innovative products and unrelenting customer service, protecting what matters most.

## THE PASSIONATE, SINGLE-MINDED MARKET LEADER



### Superior Product



### Fastest Lead Time



### Ongoing Support



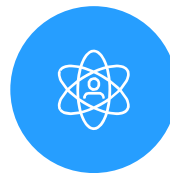
### Customer-Focus

Personalized, attentive care from start to finish.



### Innovation

Creative, unmatched solutions for the most demanding applications.



### Integrity

Honest, responsible, and caring. We treat our customers and each other with respect.



### Quality

Exceptional high-durability products and service. Unrelenting support.

## RELATED INDUSTRY AFFILIATIONS



## RELATED PRODUCTS



Front



Middle



Back

## A Trusted Partner

With over 35 years of security product experience and more than 40,000 retail locations protected by QMi, we have the skills to do the job right.

You can have confidence knowing that your investment is well protected.

