

LX6 Commercial / CLEAR SHUTTERS

Clearly Secure, Strongly Defended



Flexible Visibility, Inside and Out

BRINGING OPEN-STYLE, AIRY APPEAL TO MIXED USE SPACES

In recent years, there has been a significant shift towards innovative security solutions that prioritize both protection and aesthetics. Clear security shutters, such as the QMi LX6, have emerged as a popular choice for architects, designers, and operators seeking to safeguard indoor and outdoor spaces while maintaining high visibility.

These transparent barriers offer a unique blend of security and functionality, making them ideal for establishments like hotels, restaurants, and modern commercial spaces.

QMi LX6 shutters allow natural light and views to pass through, creating a more inviting and open atmosphere. This is particularly important for businesses that rely on natural light and customer visibility, such as retail stores and cafes.

Beyond their aesthetic appeal, QMi LX6 Clear security shutters provide robust protection against threats of vandalism, theft, and adverse weather conditions.



LX6 protects the entrance of a local bank branch.

**Perhaps one of the most crucial trends...
is incorporating a cohesive and
seamless transition design between the
indoors and outdoors.**

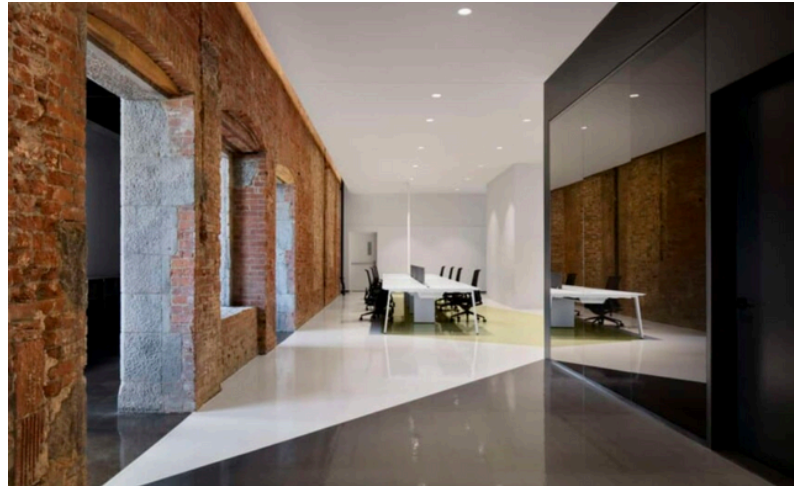
—Design Pool, *Three Trends in
Indoor/Outdoor Spaces, 2023*

**A decade ago, security was not
considered a top priority, but it is now a
top 3 concern of architects.**

—Facilities Management, *Is Physical Security an
After Thought in Building Design, 2024*



Outdoor bars and restaurants seeking stylish security that maintains visibility.



Mixed use office spaces installing security to subdivide and secure areas while maintaining aesthetic appeal.

LX6 Shutters Provide Strength and Modern Clarity in Every View

SECURE YOUR SPACE



Counter



Storefront



Bars and Restaurants



Airports



Stadiums

FEATURES

- Polycarbonate slats provide excellent visibility.
- Engineered couplers and vertical spacers create strength to thwart forced entry attack.
- Lightweight design for effortless operation.
- Attachable to existing walls or window mullions, perfect for retrofitting existing spaces.
- Spans widths up to 19 ft 6 in, with wide range of operators.

OPTIONS

- Spring-assist or gear manual operation and tubular motor operation are available based on size and configuration.
- Jackshaft operator available for largest curtains.
- Wide range of lock options (manual) for your application.
- Housing, rail, and base slat color range available to match surrounding aesthetic.

Aluminum horizontal couplers enhance shutter durability for long-term resilience

Manual and Motorized options maximize flexibility

Standardized, 3ft-wide polycarbonate sections create practical visibility across spans up to 19 ft 6 in.

CLARITY MEETS RESILIENT SECURITY

Seamlessly visible indoor and outdoor protection.

LIGHTWEIGHT. VERSATILE. SECURE.

Prioritizing visibility, these feather-light shutters act as your shield from threats and the elements while inviting generous amounts of light. The LX6 Clear Shutter system marries formidable security with a stunning design.

Fabricated with clear polycarbonate inserts, the LX6 rolling shutter is a lighter weight and medium-duty shutter that provides excellent visibility. With manual or motorized operation, and easy integration into existing designs, they offer a stylish, secure solution for any setting.

CORE APPLICATIONS

LX6 provides high visibility and flexible configurations for a wide range of applications.

- Storefront** High visibility to ensure merchandise can be seen after hours, LX6's small footprint and tubular motor options ensure great aesthetics and easy operation.
- Counters** Scalable to small or wide openings, LX6 provides practical visibility in motorized or manual counter protection.
- Kiosks** Well-suited for kiosk or free-standing merchandising needs, LX6 blends visibility with security.

Banks, airports, bars + restaurants, and a wide variety of retailers trust LX6 to protect their high-traffic areas.

Clarity Delivered

CLEAR AND PREPARED

Seamlessly merge transparency with elegance through our LX6 clear shutters. Prioritizing optimal visibility, these feather-light shutters shield you from criminal threats and outside elements while inviting customers and generous amounts of light into your space.

- Unrivaed visibility fosters an atmosphere of openness, blending indoors and out.
- Elegant anodized finish complements nearly all aesthetics.



Clear polycarbonate panels offer excellent visibility and enhance the customer experience.



LX6 shutters transform almost any opening, providing sophisticated security in outdoor spaces.

Durability Defined



Anodized aluminum horizontal couplers afford the shutters extraordinary resilience, promising long-term performance without sacrificing style.

RIGID, RESILIENT, AND REASSURING

The LX6's anodized aluminum horizontal couplers and vertical spacers provide exceptional durability and robust construction, forming a steadfast barrier against intruders. This design merges aesthetics with resilience, ensuring long-term performance without compromise.

- Creates lightweight strength throughout the curtain.
- Absorbs, and dissipates, energy from attacks.
- Ensures consistent operation day-in and day-out.



A high-end specialty apparel retailer protects their merchandise while ensuring visibility.

Housing and Control Options

HOUSING SHAPES

Various housing styles choices make it easy to match the aesthetics of your business.

Constructed from aluminum alloy and available in 6", 6.5", 7", 8" and 10" sizes.



90° angle
(square)



45° angle



Round



LX6 Clear shown here cycle testing to validate performance.

CONTROLS

Manual and motorized choices, both standard and override, provide effortless operation across diverse openings.

Manual Operation (Spring Assist or Gear)

Cost-effective, spring-assisted push up/pull down or crank pole (gear) systems.

Wired Motors

Key or toggle wall switch activation for day-to-day reliability, either single or multi shutter control.

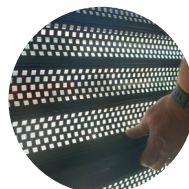
Wireless Remote Motor (HZ)

Remote operation for commercial environments seeking flexibility.

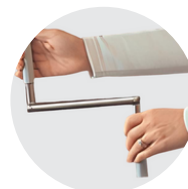
Jackshaft Motors

Jackshaft operators for large shutters and above-ceiling installations provide reliable, durable control.

QMi partners with industry-leading motor manufacturers like Somfy® to offer the highest quality drive, software, and control options.



Spring Assist
(Manual)



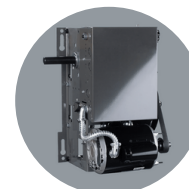
Crank Pole
(Manual)



Wall Switch
(Key or Toggle)
(Motor)



Wireless Remote (HZ)
(Motor)



Jackshaft Motor

Lock and Color Options

LOCKS

Patented lock slat designs provide easy locking functionality across shutter use cases. Retractable mechanisms ensure a hassle-free installation and minimal upkeep, while the added felt and bulb seals at the base enhance protection and durability for your peace of mind.

Base Slat Thumbturn

- Base slat thumbturn or keyed lock for floor-level installations.

Slide Lock

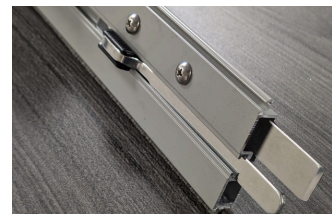
- Manual slide lock for window, counter, or knee wall applications.

Motor Brake

- General base slat that leverages motor brake to provide locking for entire curtain system.



Thumbturn Lock



Slide Lock



Motor Brake

COLORS AND FINISHES

LX6 curtains (couplers, vertical spacers) are available in a luminous clear anodized finish, while additional colors and finishes are available for other components.

The versatile range matches or complements any architecture style.

Curtain



Clear Anodized
(Silver)

Housing, Rails, Base Slats



Clear Anodized
(Silver)



Beige



Bronze



Gray



Brown



Ivory



White



Custom

Contact your QMi Sales or Project Support Representative for pricing and lead times on custom color options.

Case Study: Hotel Patio Bar

OVERVIEW

A high-end hotel in a popular southwest vacation destination sought to enhance the security of its open-air bar and patio without sacrificing its inviting atmosphere. QMi LX6 Clear shutters proved to be the ideal solution. The LX6 shutters offered a transparent barrier, effectively deterring theft and vandalism while preserving the open-air ambiance cherished by guests.

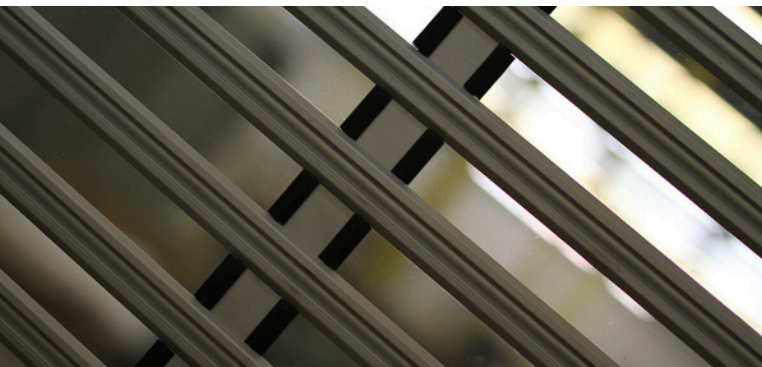
The LX6 shutters' customizability allowed for a seamless integration with the hotel's existing architecture, maintaining the aesthetic appeal of the outdoor space. The clear panels provided unobstructed views, ensuring the area remained secure without feeling enclosed or restrictive.

Beyond security, the LX6 shutters also offered protection against the region's challenging weather conditions, including wind, rain, and blowing sand. This ensured the outdoor space could be enjoyed year-round, further enhancing the guest experience.

By investing in QMi LX6 Clear shutters, the hotel successfully addressed its security concerns while preserving the aesthetic and functional appeal of its outdoor bar and patio. This strategic move not only improved guest safety and comfort but also strengthened the hotel's reputation as a secure and enjoyable destination.



Hotel bar personnel have great views outdoors, even when shutters are down.



Clear anodize slats (silver) blended well with the outdoor space.

"The LX6 shutters have been a game-changer for our outdoor bar. We no longer worry about security or weather disruptions, and our guests love the open-air feel that's maintained year-round. It's a win-win for everyone!"

— Hotel Employee



Secure, stylish, and sleek LX6 installation.

Why Choose Us



AN ENTIRE COMPANY BUILT AROUND SECURITY-DRIVEN INNOVATION

We provide innovative products and unrelenting customer service, protecting what matters most.

THE PASSIONATE, SINGLE-MINDED MARKET LEADER



Superior Product



Fastest Lead Time



Ongoing Support



Customer-Focus

Personalized, attentive care from start to finish.



Innovation

Creative, unmatched solutions for the most demanding applications.



Integrity

Honest, responsible, and caring. We treat our customers and each other with respect.



Quality

Exceptional high-durability products and service. Unrelenting support.

RELATED INDUSTRY AFFILIATIONS



RELATED PRODUCTS



Front



Middle



Back

A Trusted Partner

With over 35 years of security product experience and more than 40,000 retail locations protected by QMi, we have the skills to do the job right.

You can have confidence knowing that your investment is well protected.

