

Qcompact® Residential / HURRICANE SHUTTERS

The Gold Standard In Storm Protection



Proactive Hurricane Preparedness for Homeowners

PROTECTING HOMES FROM EXTREME WEATHER EVENTS

In an era of escalating climate change, hurricanes have become more frequent and intense, posing a significant threat to coastal communities. Protecting homes from these destructive storms is paramount, and Qomcompact hurricane shutters offer a reliable and durable solution.

Designed to withstand the force of high winds and flying debris, Qomcompact shutters provide a robust barrier against the elements. As the strongest hurricane shutter on the market*, their innovative construction incorporates advanced materials and engineering techniques to ensure maximum protection.

Unlike traditional shutters, Qomcompact’s small shutter box is not only functional but also aesthetically pleasing, blending seamlessly with modern architectural styles. They are easy to instal and operate, making them a convenient choice for homeowners. Their flexible range of styles, finishes, and controls ensure ease of use in any home.

By investing in Qomcompact hurricane shutters, you can safeguard your home from the ravages of storms and enjoy peace of mind knowing that your property is well-protected.



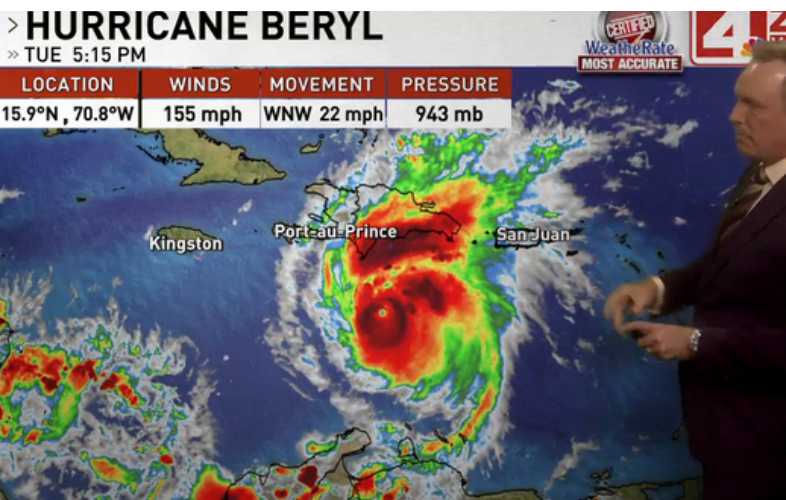
Qomcompact shutters offer reliable protection with elevated style.

6 of 10 most active hurricane seasons on record have occurred in the last 20 years.

—The Weather Channel, 2024

Proportion of major hurricanes (Category 3 and above) in the Atlantic Ocean has doubled since 1980.

—NOAA, 2024



Storms continue to strengthen, occur more frequently, and bring destruction to coastal communities in the South and East.



Qomcompact hurricane shutters offer a shield against the growing threat of extremely dangerous and devastating storms.

The Most Trusted Hurricane Shutter on the Market

SAFETY + SECURITY FROM SEVERE STORMS



Hurricanes



Heavy Winds



Hail

Smallest shutter box in the industry across all motorized and manual models minimizes visible footprint

Patented rail and hinge design provide superior strength

Optimized hinge design reduces water and sand impacts



FEATURES

- A precision-engineered system with unrivaled strength.
- Space-saving design with the industry's smallest box.
- Designed for reliably smooth, quiet operation.
- Enhanced slats and hinges for greater resistance to water and sand infiltration.
- Wide maximum spans to cover larger home openings.

OPTIONS

- Versatile housing styles for your home.
- Patented lock slat designs for a variety of use cases.
- Manual and motorized operators for any opening type.
- Mounts to various substrates in a range of configurations.
- Standard and custom color finishes are available.
- Virtual assistant and Smart Home compatibility.

Unparalleled Strength

STRENGTH THAT MATTERS

Engineered with groundbreaking advancements, Qompack shutters offer a nearly impenetrable defense against even the fiercest hurricanes.

- All components work together to form the strongest hurricane shutter on the market*.
- Thick slats for top-tier dent resistance.
- Resists winds up to 180 MPH, even Category 5 hurricanes.
- Withstands forceful impact from wind-borne debris.
- Patented rail design for optimal strength and longevity.



Qompack's unmatched strength meets the highest wind loads at span.

**Based On Design Pressure At Span (FBC)*



Qompack shutters protecting openings on a covered porch.

High Durability



Before they reach your home, Qcompact shutters undergo rigorous operational run testing to ensure optimal performance and durability.

RESILIENT, AND BUILT TO LAST

Prioritize longevity with our meticulously designed shutters. We've integrated features that minimize wear from the elements, ensuring your shutters remain pristine and functional over time.

- Optimized wrap and engineered fasteners ensure a scratch-free finish.
- Enhanced hinge backbend for optimal resilience and reduced risk of water and sand infiltration.
- Refined system tolerances to ensure smooth operation over thousands and thousands of cycles.
- Highest quality aluminum construction w/high-resilience finishes.



Qcompact shutters protecting a second-floor back patio from day-to-day elements and hurricane threats.

Superior Aesthetics

SLEEK SECURITY, SOPHISTICATEDLY STYLED

Blend seamless protection with unmatched elegance. Our inventively designed shutters offer a compact and cohesive appearance without sacrificing safety.

- Ingenious 12-slat design for a sleek, compact roll.
- Patented nesting reduces wrap size, ensures a tight fit.
- Innovative snap cover system conceals fasteners, presenting a flawless, polished exterior.
- Contemporary colors to match any decor.



The elegantly designed and tightly nested Qcompact roll sets the standard for sleek security and strong style.



White Qcompact shutters protecting the windows and doors of a ocean front property in Maine.

Enhanced Operation



The instinctive finger pull paired with a mid-curtain lock makes operating and locking manual Qomact shutters absolutely effortless.

EFFORTLESSLY ACCOMMODATING

Ultra-smooth and whisper-quiet, Qomact shutters offer a seamless blend of safety and sophistication. Their user-centric design promises effortless control and enduring reliability for years to come.

- Bushing-guides roll smoothly in industry-strongest rails.
- Intuitive finger pull coupled with a mid-curtain lock enhances user experience in manual operation.
- Range of motorization options delivers consistent performance.



Qomact shutter securing a double-door opening from extreme weather.

Expanded Flexibility

INSTALLATION VERSATILITY

Tailor your shutter installation to your home's unique specifications. Our advanced design allows for a vast range of configurations, ensuring a precise fit for any opening, while simplifying the setup process.

- A broader range of adaptive configurations accommodates diverse home openings.
- Generous max span up to 236 in. width (19ft, 6in.) or 288 in. height (24 ft.)
- Pre-drilled rail holes on both walls facilitate a swift, streamlined installation with precise spacing for hurricane compliance.
- Snap cover fits snugly over hole-track for clean appearance.



Pre-drilled rail holes make for an even easier installation.



Compact shutters broad spans have you covered, with a wide range of configurations protecting every vulnerable opening of your home.

Housing and Control Options

HOUSING SHAPES

Housing style choices make it easy to match the aesthetics of your residence.

Box Housing

Constructed from aluminum alloy in 6, 6.5, 7, 8 and 10 in. sizes



90° angle
(square)



45° angle



Round

CONTROLS

Manual and motorized choices, both standard and override, provide effortless operation.

Manual Operation (Spring-Assist or Gear)

Cost-effective, spring-assisted push up/pull down or crank pole (gear) systems.

Wired Motor

Convenient wall switch activation for day-to-day reliability, either single- or multi-shutter control. Standard or override. Line Voltage.

Battery Motor (EZ)

Provides flexible, low-voltage battery operation to minimize wiring and maximize positioning choices.

Wireless Remote Motor (HZ)

Remote operation provides flexibility across your home. Standard and override. Line Voltage.

Smart Home TaHoma™ (HZ)

Remote operation provides flexibility across your home.



Spring Assist
(Manual)



Crank Pole
(Manual)



Wall Switch
(Motor)



Wireless Remote (HZ)
(Motor)



Battery (EZ)
(Motor)



TaHoma™ (HZ)
(Motor)

QMi partners with industry-leading motor manufacturers like Somfy® and OZ Roll® to offer the highest quality drive, software, and control systems.

Easily connect to Google Assistant, Alexa, & more



Lock and Color Options

LOCKS

Our locking slat options offer a secure fit for any opening, with QMi's patented designs catering to your needs. Our retractable mechanisms simplify installation and upkeep, and our felt and bulb seals ensure a polished finish and strong performance in extreme weather conditions.

Base Slat Thumbturn

- Stand-alone or paired with mid-curtain lock.
- Center or off-center (custom) placement to meet application needs.
- Weather resistant mechanism for coastal environments.

Slide Lock

- Easy-to-use slide mechanism.
- Robust security for window applications.

Mid-Curtain Lock

- Light-weight, easy-to-use lock as stand-alone or paired with a base slat thumbturn.
- Centered or off-center (custom) placement to meet application needs.

Motor Brake

- Motorized shutters leverage the motor brake to provide locking for entire curtain.
- High-strength base slat extrusion provides weight and stiffness.



Base Slat Thumbturn



Slide Lock



Mid-Curtain Lock



Motor Brake

COLORS

Powder coat and wet paint options for both standard and custom colors are available.



Black Anodized



Beige



Bronze



Gray



Ivory



White



Custom

Contact your QMi Sales or Project Support Representative for pricing and lead times on custom color options.

Tested to the Strictest Standards

COMPACT SHUTTERS MEET THE STRICT STANDARDS FOR HURRICANE APPROVALS.

- Florida Building Code (FBC) (HVHZ & non-HVHZ)
- Texas Department of Insurance (TDI)
- Miami-Dade County Notice of Approval (NOA)
- International Building Code / International Residential Code (IBC / IRC)

Confidently Secure Your Home From
The Strongest Hurricanes.



QMi tests for hurricane performance and overall cycle durability.

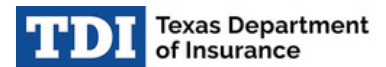
Certifications



(HVHZ & non-HVHZ)



(NOA)



(SHU)

Note: Testing in accordance with TAS 201/202/203 and ASTM E330/E1886/E1996 Missile Level D

Industry's Best Warranty*



** Applies to Residential applications only and homeowner who follows Use and Care Guidelines*

Case Study: Gulf Shores Protection

OVERVIEW

Hurricane Sally, a Category 2 storm, brought winds up to 105 mph, causing widespread damage from storm surge and flooding across coastal Alabama and the western Florida Panhandle. The Gulf Shores community, including unprepared homeowners, faced substantial costs from property damage and disruption. In response to witnessing the devastation, a proactive homeowner sought a dependable solution to protect their property.

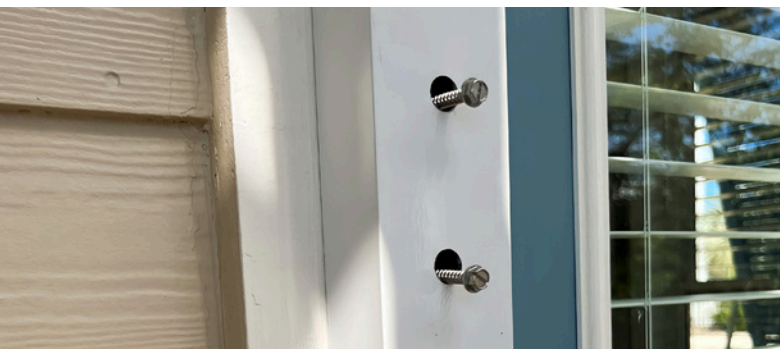
QMi offered a customized solution to meet the homeowner's needs and exceed their expectations. With Qcompact hurricane shutters installed on all doors and windows facing the Gulf of Mexico, the homeowner received multiple benefits.

The shutters enhanced safety and security, protecting their home from high winds, storm surges, and potential flooding. They also improved aesthetics and property value, as the shutters seamlessly integrate with the home's design. Additionally, they had peace of mind knowing that Qcompact's industry-leading performance and associated warranty would stand the test of time.

Safe and secure with their new shutters from QMi, these gulf coast residents are ready to face any future weather event that comes their way.



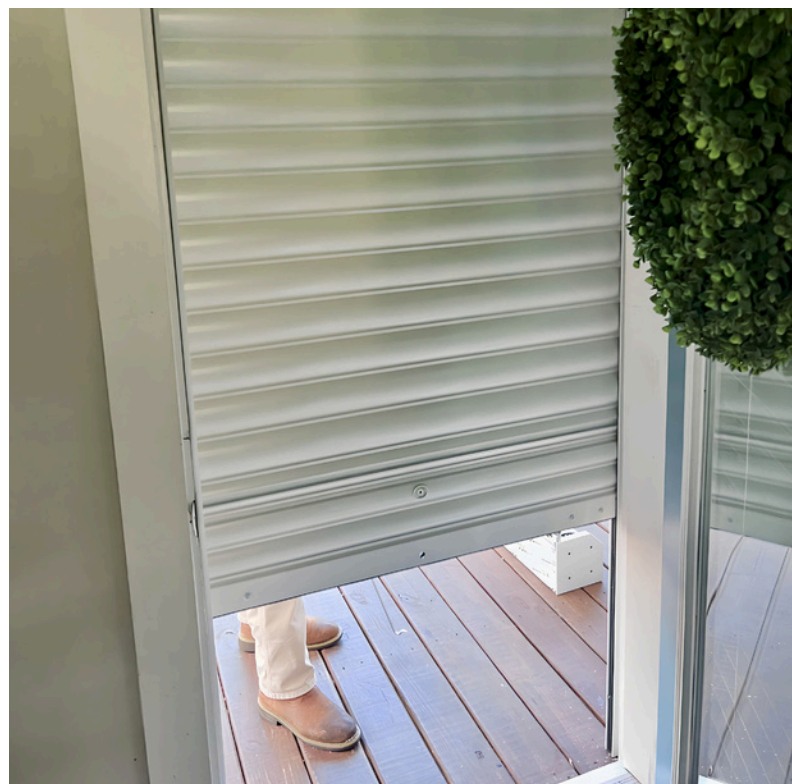
Expert QMi dealer partners preparing another exterior Qcompact shutter over the home's double door.



Pre-drilled rails provided an easy installation.

"We're very happy with our Qcompact Hurricane Shutters. The installation crew was very friendly and efficient, and our family feels safer than ever heading into storm season."

— HOMEOWNER



An exterior mounted Qcompact shutter being manually closed after being installed to protect the home's front door.

Why Choose Us



AN ENTIRE COMPANY BUILT AROUND SECURITY-DRIVEN INNOVATION

We provide innovative products and unrelenting customer service, protecting what matters most.

THE PASSIONATE, SINGLE-MINDED MARKET LEADER



Superior Product



Fastest Lead Time



Ongoing Support



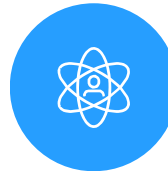
Customer-Focus

Personalized, attentive care from start to finish.



Innovation

Creative, unmatched solutions for the most demanding applications.



Integrity

Honest, responsible, and caring. We treat our customers and each other with respect.



Quality

Exceptional high-durability products and service. Unrelenting service and support.

RELATED INDUSTRY AFFILIATIONS



RELATED PRODUCTS



A Trusted Partner

With over 35 years of security product experience and more than 40,000 homes and retail locations protected by QMi, we have the skills to do the job right.

You can have confidence knowing that your family, assets, and property are well protected.

