



# THE **New** *Smart*

Choice in Hurricane Protection







# The New Choice

**Not just better because they are different. Different because they are better.**

When it comes to hurricane protection for your home, there's a new choice. One that delivers so much more for your money that it's in a class all by itself. It's QMI.

You have many choices when it comes to storm protection: storm panels, accordion shutters, windows, film, fabric tents, rolling shutters, or QMIs. The QMI hurricane shutter is unlike any other product—it delivers maximum strength, unique technology, unmatched good looks, and outstanding value. QMIs are also incredibly easy to install and operate.

When you compare QMIs to the other options, the difference is clear.

While storm protection is the number one reason people buy hurricane shutters, QMIs give you so much more. They also help protect your lifestyle by providing security, sun protection, energy conservation, privacy, and noise reduction. Storm panels and accordion shutters get used only during hurricanes. QMIs deliver benefits every single day, giving you a much greater return on your investment.



When you're ready to purchase hurricane protection, just say you want a QMI.

***Nothing else comes close.***

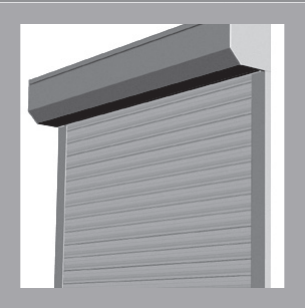




# Nothing Else Comes Close



Exclusive QMI Shutters



Other Rolling Shutters



Accordion Shutters



Storm Panels

When compared to other types of hurricane protection, QMIs are in a category by themselves. Want more for your money? Make the smart choice—get QMIs.

Features and Benefits		with patent-pending no-slip hinges and end retention system	standard hook with slip hinges		
Everyday Lifestyle Uses	Storm Protection	👍	👍	👍	👍
	Security	👍	👍	👎	👎
	Sun Protection	👍	👍	👎	👎
	Energy Conservation	👍	👍	👎	👎
	Privacy	👍	👍	👎	👎
	Noise Reduction	👍	👍	👎	👎
Price	Initial Cost	\$\$\$	\$\$\$\$\$	\$\$	\$
	Installation Cost	\$	\$	\$\$\$\$	\$\$\$
	Cost per Feature	\$	\$	\$\$\$\$	\$\$\$\$\$
	Cost per Operation	\$	\$	\$\$\$\$	\$\$\$\$
	Resale Value	\$\$\$\$\$	\$\$\$	\$\$\$	\$
	Total Cost of Ownership	\$	\$	\$\$\$\$\$	\$\$\$\$
Use	Ease of Use	👍	👍	👎	👎
	Second Floor Installation	👍	👍	👎	👎
	Storage	👍	👍	👎	👎
Operation Manual	Simple Manual Operation	👍	👎	👍	👎
	Push Up/Pull Down	👍	👎	👎	👎
	Removable Crank/Gear	👍	👍	👎	👎
Operation Motorized	12v Smart Drive Motor w/Battery Backup	👍 New!	👎	👎	👎
	Standard 120v Motor	👍	👍	👎	👎
	Remote Controls	👍	👍	👎	👎
	Wind/Sun Sensors	👍	👍	👎	👎

OPTIONS & SPECIFICATIONS  
GREATER SIMPLICITY  
AFFORDABLE, SUPERIOR VALUE  
BETTER LOOKS  
SMARTER, PATENT-PENDING TECHNOLOGY  
NOTHING ELSE COMES CLOSE



QMI set out to develop a hurricane shutter that would be superior to anything on the market yet affordable for the average consumer. Our hurricane shutter is the result of four years of engineering and an investment of more than \$500,000.

The numbers tell the story of our relentless pursuit of quality:

- 10,000 hours of design engineering and product testing
- over 56 test specimens
- 250 separate hurricane approval tests
- 175+ large missile impact tests
- 200+ mph wind tests
- over 25 design modifications

The outcome of such rigorous testing is a product that features the most advanced technology on the market.

## AL7 Single-Wall Slat

The lightweight QMI AL7 single-wall aluminum slat uses less material than other shutters, resulting in a lower overall cost and a faster, less expensive installation process. Thanks to their unique design, QMIs are the strongest and lightest shutters approved for hurricane protection.

The AL7 is the only single-wall slat on the market that can span widths up to 20 feet without the use of expensive and unsightly storm bars.

AL7 slat



# Smarter Technology



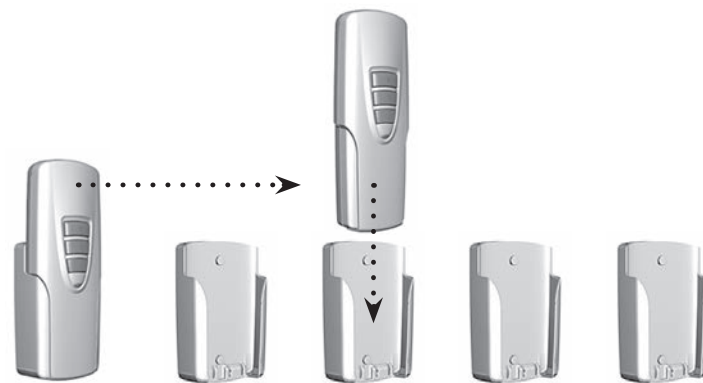
## E-Z Drive System

Only QMI offers the optional low-voltage (12v) Smart Drive motor. This motor works via a removable battery pack even when power is interrupted, providing homeowners with invaluable peace of mind. And since it requires no electrical connection to your household wiring, installation is quick and affordable.

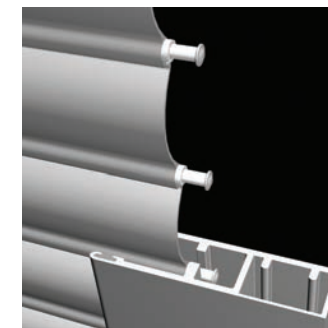


## Smart Drive Controller

Our patent-pending Smart Drive controller works with the Smart Drive motor to create a fully motorized shutter. It easily plugs into any wall socket to charge the portable power pack, provides up to 50 operations per charge, and can be stored anywhere.



A single unit can power multiple shutters.



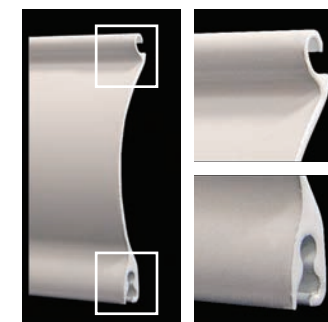
## End Retention System

Our shutters gain added strength from our patent-pending end retention system that prevents high winds from pulling the shutter curtain out of its sidetracks. This unique technology allows our AL7 slats to cover widths up to 20 feet without the use of storm bars.



## Counter Balance Spring

QMIs are virtually effortless to use, thanks to exclusive counter balance springs that provide smooth operation in even the toughest environments. It only takes a couple of fingers to raise or lower our shutters. Our patented spring stop system cushions the impact of the shutter when it reaches the housing unit.



## Low Clearance Hinge

Only QMIs feature a patent-pending, low-clearance hinge with no-slip slats that create a single, continuous curtain that rolls tight when not in use. Thanks to this technology, our shutters feature a smaller and less obtrusive housing unit.

QMI slats are approved for hurricane protection in Florida and Texas and comply with the requirements of the International Building Code.

OPTIONS & SPECIFICATIONS  
GREATER SIMPLICITY  
AFFORDABLE, SUPERIOR VALUE  
BETTER LOOKS  
SMARTER, PATENT-PENDING TECHNOLOGY







Gone are the days when storm protection for your home meant having to live with a “boarded up” look. Unlike old-fashioned storm panels and accordion shutters—and unlike other roll-up shutters—QMIs provide an attractive and sophisticated appearance. While other storm protection products detract from your home’s appearance, QMIs actually enhance it.



#### **Single Curtain**

QMIs can span 20+ feet, creating a clean, continuous look.

#### **Small Housing Unit**

Since QMI shutters roll tight when not in use, they use a smaller, less obtrusive housing unit. QMIs virtually disappear when retracted, leaving an unobstructed view.

#### **No Storm Bars**

Thanks to QMI’s advanced technology, our exclusive profiles provide maximum protection without the use of unattractive and expensive storm bars.

#### **Decorative Options**

QMIs come in a variety of colors with optional decorative covers that add architectural accents to windows and doors.







# Superior Value

Outstanding storm protection is the number one benefit of our hurricane shutters, but it's only the beginning. QMIs also provide many additional features that enhance your lifestyle on a daily basis.

With other hurricane protection products, you may only use them a few times over the course of many years. Since QMIs deliver value every day, they're a much less expensive option over their lifetime than other products. They are the smartest, *most affordable* choice for the long term.

## Security

QMIs serve as an effective security system by deterring burglars—when they're locked, they create an added level of security. Unlike a security alarm that simply alerts you to a break-in, QMIs provide a visible barrier that prevents break-ins.

## Sun Protection

Carpets, furniture, and wall hangings are protected from harmful UV light when QMI shutters are fully or even partially closed.

## Energy Conservation

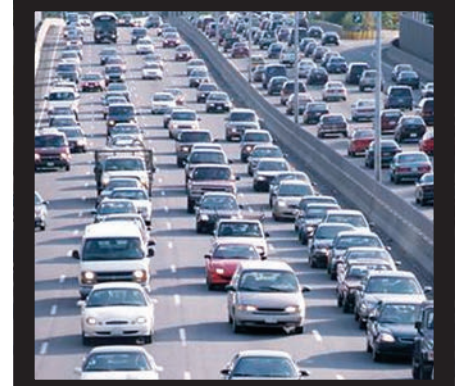
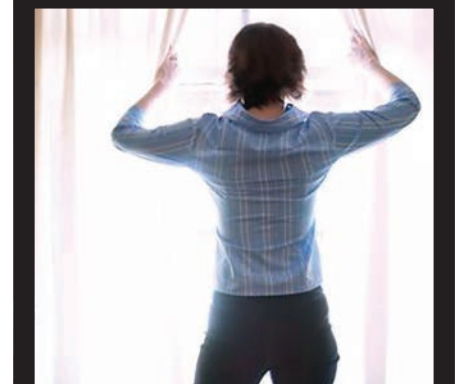
QMIs help lower your heating and air conditioning bills because windows are sealed from drafts. Your home stays cooler in the summer and warmer in the winter.

## Privacy

When closed, QMIs provide complete privacy. And, unlike other brands of rolling shutters, you enjoy an unobstructed view when the shutters are open.

## Noise Reduction

Closed QMI shutters decrease outside noise 50% or more.







# Greater Simplicity

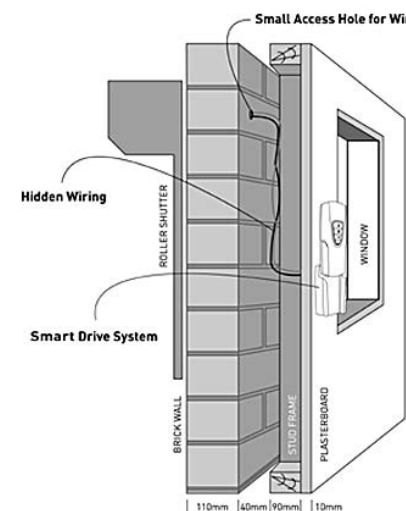


From initial set up to daily operation, QMIs are designed for ease of use.

## Installation

Professional installers often tell us how easy it is for them to set up QMI shutters, and that ease translates into significant cost savings for consumers—up to 50% less than the installation cost of other rolling shutters. And since our Smart Drive motor is powered by a low-voltage battery, QMIs don't require an electrician or expensive electrical wiring.

For sales and installation, turn to our network of professional dealers in the United States, Canada, Mexico, and the Caribbean.



*The E-Z Drive System is simple to install. The low-voltage motor requires only a small hole drilled for the wiring; it does not require the expensive services of a professional electrician.*



## Operation

Whether you choose manual or motorized operation, QMIs are amazingly easy to use—preparing for a storm takes minutes, not hours. When operated by hand, QMIs are easy to push up and pull down. When installed with a motor, a quick flick of a switch or press of a remote control button sets the shutters in motion.

Unlike other products, QMIs require minimal maintenance. Storm panels must be removed when not in use, and accordion shutters require monthly operation and lubrication and are prone to debris buildups in their operational tracks. QMIs are ready when you need them and trouble-free.

## Motorized Controls

Choose from two types of motors:

- **NEW E-Z Drive** – 12v battery pack allows operation of shutters even when power is out. Remote control can operate multiple shutters anywhere in home. No household wiring required, making installation easy. Exclusively for QMI shutters with no-slip hinges.
- **Tubular motor** – Operated by a simple on/off switch that runs off 120v electrical current. Requires professional installation. Optional battery operation for use in power outage, remote control, manual override, sun and wind sensors, house automation integration, and multi-unit operation.

## Manual Controls

QMI's technology makes it easy to open and close shutters by hand. Choose either:

- **Manual push up/pull down** – Quick and easy installation. Simply push up and pull down the shutter. An exclusive feature of QMI shutters with no-slip hinges.
- **Crank operation** – Used for indoor operation. Ideal for hard-to-reach shutters. Crank handles are detachable.



*You can trust our nationwide network of sales and service partners.*



smart drive motor



smart drive controller



wall switch controller



easy to push up



easy to pull down



crank operation



We offer a variety of slats and decorative and functional options, allowing you to customize your hurricane shutters to meet your exact needs. We take pride in very quick turnaround times—most QMIs are measured, manufactured to order and delivered in less than two weeks.

Every component of our hurricane shutter is manufactured and assembled according to strict quality controls. Each QMI shutter is custom-made, inspected, fully assembled and tested before the delivery.

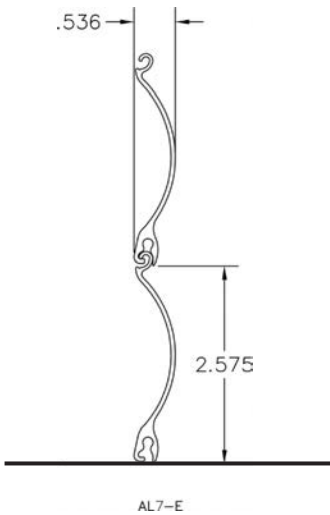
AL7 slats are approved by

IBC International Building Code

IRC International Residential Code

TDI Texas Department of Insurance

FBC Florida Building Code



Housing Comparison

Housing Shapes


Housing Colors

	Square				45 Degree Front						Round		
	6"	7"	8"	10"	6"	7"	8"	10"	12"	16"	6.5"	7"	8"
White	1	1	1	1	1	1	1	1	1	1	1	1	1
Brown	2	2	2	2						2	2		
Ivory	3	3	3	3		3	3	3	3				
Beige	4	4	4	4		4	4	4			4		4
Grey	5	5	5	5	5	5	5	5	5	5	5	5	5
Bronze		6	6	6						6			
Anodized		7	7	7					7	7			

Stock colors listed. For information on custom colors, please contact QMI.

Slat Comparison

QMI Patent-Pending Slats  
with no-slip hinge and end retention system

Colors	Features	AL7-E	AL7-T
	Single Wall	●	●
	Double Wall	●	●
	Thick Wall	●	●
	End Retention	●	●
	Low Clearance Hinge	●	●
	Standard European Hinge	●	●
	Counter Balance Spring	●	●
	Maxi System	●	●
	Mini System	●	●
	Storm Bars Required	●	●
	Profile Height	2.575"	2.575"
	Weight Per Sq. Ft. (in lbs)	1.17	1.41
		Maximum Track Height	
Coil Size			
7"		92"	92"
8"		129"	129"
10"		192"	192"
12"		271"	271"





1661 Glenlake Avenue  
Itasca, IL 60143  
T: 800.446.2500  
T: 630.529.7111  
F: 630.980.6364

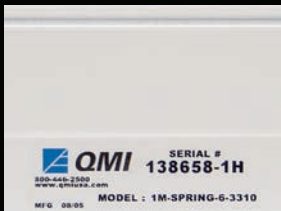
[www.qmiusa.com](http://www.qmiusa.com)

### See the Difference

Compared to all other hurricane protection products on the market, QMI hurricane shutters deliver the greatest return on your investment in terms of technology, looks, value, and simplicity. Demand QMIs not only for shutters that are tested to withstand 200 mph hurricane winds, but for shutters designed to be used everyday for privacy, protection against temperature, noise and sun fade, and security against break-ins. QMIs are in a class by themselves.

For the full story of the QMI difference, please visit us at [www.qmiusa.com/seethedifference](http://www.qmiusa.com/seethedifference).

**Not just better because they're different. Different because they're better.**



### Guarantee it's a QMI

QMI is the name to trust for hurricane protection and valuable lifestyle features. Don't settle for anything less—look for the QMI seal on your hurricane shutter that identifies it as a true, quality QMI product. This serial number enables you to certify that you have received what you have paid for and *not a cheaper substitute*.

We encourage you to register your shutters for information regarding products, service, installation, maintenance, warranty, technical support, and special notices and promotions. We keep full records and replacements for all products we manufacture to insure that you can get approved replacement parts long after the sale.

Registration is easy. Logon to [www.qmiusa.com/myqmi](http://www.qmiusa.com/myqmi).

If you believe you've received a product other than an authentic QMI shutter, please let us know so we can help. Call us or logon to: [www.qmiusa.com/rippedoff](http://www.qmiusa.com/rippedoff).